



2025 Sustainability Report

RUICHANG INTERNATIONAL HOLDINGS LIMITED

(Incorporated in the Cayman Islands with limited liability)

(Stock Code:1334)

Contents

About the Report	01
Leadership Message	02
2025 Sustainability Highlights	03
About Ruichang International	06

Appendices	62
------------	----

Green Technology, Clean Guardianship of Ecology 01

Clean Technology	12
Climate Change Adaptation	23
Environmental Management	27
Emission Management	29
Resource Management	31

Ingenuity Empow- erment, Shared Responsibility 02

Employee Care	34
Innovation, Research and Development	45
Product Stewardship	48
Sustainable Supply Chain	53
Social Welfare	55

Upholding Integrity and Strengthening Governance Foundations 03

Corporate Governance	57
Risk Management	58
Business Ethics	59
Data and Privacy Protection	60



About the Report

This is the second sustainability report published by Ruichang International Holdings Limited. It systematically addresses our sustainable development philosophy, practices, and performance, while responding to the key concerns of stakeholders.

The report adheres to the principles of accuracy, balance, consistency, clarity, comparability, completeness, timeliness, and verifiability.

Reporting Standards

The preparation of this report references the Hong Kong Stock Exchange's ("HKEX") Environmental, Social, and Governance ("ESG") Reporting Guide. Climate-related disclosures are based on the IFRS Sustainability Disclosure Standard S2 Climate-related Disclosures ("IFRS S2") and HKEX's Climate Disclosure Guidelines. We strive to fully reflect the ESG topics of concern to various stakeholders while highlighting the company's characteristics based on industry specifics.

Reporting Period

This is an annual report. The data and content disclosed cover the period from January 1, 2025, to December 31, 2025 (referred to as the "Reporting Period"), unless otherwise specified. To enhance comparability and completeness, some information is appropriately extended forward or backward in time.

Reporting Boundary

The report discloses information on Ruichang International Holdings Limited and its subsidiaries' responsibilities in social, environmental, and corporate governance aspects.

Sources of Data and Information

The data and information in this report are primarily collected from the Company's internal data collection systems, statistical reports, and publicly available information. Unless otherwise specified, all monetary amounts in this report are denominated in RMB.

Reference Description

Ruichang International Holdings Limited will be referred to as "Ruichang International", "Ruichang", "the Company", or "we".

Contact Us

For any feedback or comments regarding this report, please feel free to contact us at:



Email: Investment_Relationship@Ruichang.com.cn



Mailing Address: 20th Floor, Innov Tower, No.1801 Hongmei Road, Xuhui District, Shanghai, China

Leadership Message

Chairman's Message



Dear Shareholders, Clients, Partners, Colleagues, and Friends from All Walks of Life,

The year 2025 marks Ruichang International's nearly four decades of steadfast dedication to the petrochemical, industrial heating, and air pollution control sectors, and represents a pivotal year for the company following its listing on the Hong Kong capital market, as we advance comprehensively toward green and high-quality development. Amidst industry transformation and the national "dual-carbon" goals, we remain true to our founding mission—"Ruichang Blue, China Blue"—by staying focused on our core businesses, taking pragmatic action, and driving sustainable development forward through continuous efforts in R&D innovation, green technology, market expansion, and social responsibility.

Innovation as Our Foundation, Driving Industrial

Upgrading We adhere to independent R&D and collaborative innovation between industry, academia, and research institutions, increasing technological investment and strengthening our intellectual property protection system. Breakthroughs have been achieved in key areas such as energy storage, sulfur recovery, low NOx combustion, and waste heat recovery, with numerous innovations already applied in industrial practice. The launch of the Luoyang Smart Factory and the industry-wide opening of the Combustion Testing Center signify a new level in our R&D and testing capabilities. By refining our R&D system, deepening partnerships with universities, research institutes, and industry leaders, and actively participating in the development of national and industrial standards, we drive competitiveness through dual engines of technological iteration and smart manufacturing, contributing "Ruichang Solutions" to industry advancement.

Green Leadership in Transition, Empowering Low-Carbon Development

We embed green principles across the entire lifecycle of R&D, manufacturing, and services. Focusing on core areas such as oil and gas processing, biomass utilization, energy storage, and flue gas treatment, we provide customers with full lifecycle solutions for energy saving and emission reduction. We also actively promote circular economy models, pioneering China's first demonstration project for phosphorus recovery from agricultural waste—converting livestock manure into high-value resources and promoting sustainable recycling. Our operational carbon emissions continue to decline, supported by increased clean energy adoption, improved resource recycling, and strict management of waste disposal. Through tangible actions, we safeguard the ecological environment and contribute actively to the nation's "dual-carbon" objectives.

Global Vision in Expansion, Broadening International Markets

While rooted in China, we maintain a global perspective, deepening international strategic cooperation, participating in high-end international exhibitions, and steadily expanding our overseas presence. By delivering reliable and

mature energy-saving and environmentally friendly equipment and system solutions to global markets, we continue to elevate the international influence of the "China Green Manufacturing" brand, forging new development paths while serving the global transition toward low-carbon industry.

Responsibility to Earn Trust, Building a Better Future Together

We regard our employees as our most valuable asset, ensuring their lawful rights and interests while continuously improving career development, health and safety, and humanistic care systems. We strive to build a stable, secure, and supportive platform for employee growth. Adhering strictly to product quality and customer service standards, we safeguard client interests. We remain committed to public welfare and educational support for rural development, and uphold integrity in business operations and professional conduct. Through responsible actions, we give back to society and honor the trust placed in us.

With winds of progress at our backs and great responsibilities ahead, every achievement in 2025 is a result of the hard work and dedication of all Ruichang members, as well as the trust and support from our shareholders, clients, partners, and friends across society. Looking forward, we will continue to stay rooted in our core businesses, hold fast to our green mission, intensify innovation-driven growth, expand global operations, and actively fulfill our social responsibilities. With more pragmatic actions and solid achievements, we will stand together with all stakeholders to contribute even more to industry advancement, environmental improvement, and social progress!

Lu Bo
Chairman of Ruichang International

2025 Sustainability Highlights

As a provider of energy-saving and environmental protection technologies with nearly 40 years of specialization in the petrochemical industry, industrial thermal engineering, and air pollution control, Ruichang International actively focuses its business layout on the clean technology sector. We concentrate on core areas such as energy storage, clean energy substitution, pollutant emission reduction, energy efficiency, and waste resource utilization. We drive the industrialization of clean technologies through technological innovation and are dedicated to promoting sustainable development in our industry with mature professional expertise.

2025

Ruichang International Products: Energy-Saving, Emission Reduction, and Resource Recovery Effects Achieved in 2025:

Greenhouse Gas Emission Reduction

1,100,316 tons of CO₂e

Electricity Savings

48,600 MWh

Natural Gas Savings

689.13 million Nm³

Total Sulfur Recovery

5.10 million tons

CO Emission Reduction

7,273 tons

NOx Emission Reduction

1,240 tons



Oil and Gas Processing



- ↳ Sulfur Recovery Systems and Equipment
- ↳ Incineration Systems and Equipment
- ↳ Refining Units and Equipment
- ↳ Oil/Gas Field Surface Treatment Systems



Thermal Management



- ↳ Low NOx Burners
- ↳ Flare Systems
- ↳ Waste Heat Recovery
- ↳ Cold and Thermal Storage Systems



Biomass Energy



- ↳ Livestock Manure Resource Utilization
- ↳ Biomass Steam Generation



Highlights of Key Technologies

Sulfur Recovery

- Served over 300 projects by the end of 2025.
- **High Recovery Efficiency:** Total sulfur recovery rate can reach 99%-99.5%, with some processes exceeding 99.8%.
- **Outstanding Economics:** Process structure is streamlined, with investment costs reduced and controllable.
- **Technological Innovation:** Uses patent-protected domestic catalyst combination; process gas reheating preferably uses medium-pressure steam generated by the unit itself. For low-concentration H₂S, preheating fuel gas/air can raise main furnace temperature to promote complete decomposition of hydrocarbons and ammonia; selective reduction stage requires no external hydrogen source.

Incineration and Flue Gas Treatment System

- **High-Efficiency Incineration Technology:** Waste gas preheat temperature up to 500° C, reducing fuel consumption by approximately 60%; uses an "integrated incineration-heat exchanger" structure for high thermal efficiency and significant economic benefits.
- **Resource Conversion Capability:** New waste-to-resource process technology can improve energy-saving benefits by 30% and increase by-product yield by 20%.
- **Integrated Purification Process:** Desulfurization uses wet and semi-dry processes with strong adaptability.
- **Specialized Treatment Capability:** For CO-rich tail gas, equipped with dedicated combustion control and waste heat recovery systems for energy reuse.

Catalytic Cracking

- **Low-pressure Dewatering & Tank Sealing:** Pioneered the introduction of low-pressure drop energy-saving concepts in domestic catalytic units. Compared to conventional water seal drums, pressure loss is reduced by 50%–80%, significantly lowering system energy consumption.
- **Low-Pressure Drop Auxiliary Combustion Chamber:** Pressure drop is 60%–90% lower than older equipment, stably maintained below 1,000 Pa.
- **Supporting Component System:** Includes pressure-reducing orifice plates, main air distribution systems, RT special composite wear-resistant nozzles, energy recovery ducts, etc., enhancing unit operational stability and economics, extending run cycles.

Low Nitrogen Oxide (NOx) Burner

- **Staged Combustion Technology:** Optimizes fuel-air mixing efficiency, reducing thermal NOx generation.
- **Flue Gas Recirculation (FGR):** Effectively lowers flame temperature, inhibiting NOx emissions.
- **Excellent Emission Performance:** Burner NOx emissions can be below 50 mg/Nm³, far below national emission standards.

Waste Heat Recovery

- **High-Temperature Section (Metal Module):** Suitable for flue gas inlet temperature <600° C, outlet temperature >150° C, balancing durability and efficient heat transfer.
- **Low-Temperature Section (Glass Module):** Can operate stably at <160° C, breaking through the corrosion limitations of traditional metal heat exchangers; outlet temperature can drop to around 80° C.
- **Corrosion Resistance and Sealing:** Innovative sectional heat exchanger and sealing technology effectively prevent leakage, condensation, and corrosion; equipment design life of 8-10 years, maintenance costs reduced by over 50%.
- **Outstanding Environmental Benefits:** Optimized design for various heat exchange scenarios, overall energy efficiency improved by 15%-30%; flue gas cooled to below 80 ° C via heat exchange, with some pollutants removed with condensed water, reducing emissions.

Energy Storage Systems

- **Phase Change Energy Storage Technology:** Developed modular energy storage products, already implemented in applications like commercial cold storage, achieving 20-25% energy savings and economic benefits through "peak shaving and valley filling".
- **Molten Sulfur Thermal Storage Project:** Successfully entered the pilot testing and research phase. By the end of 2025, this R&D project has secured three related patents.

Biomass Processing

- Using self-developed high-efficiency and environmentally friendly gasifiers and entrained-flow technology, efficiently converts biomass, agricultural and forestry waste, and other carbon-containing solid waste into high-value-added clean energy directly usable for industrial heating.

Environment

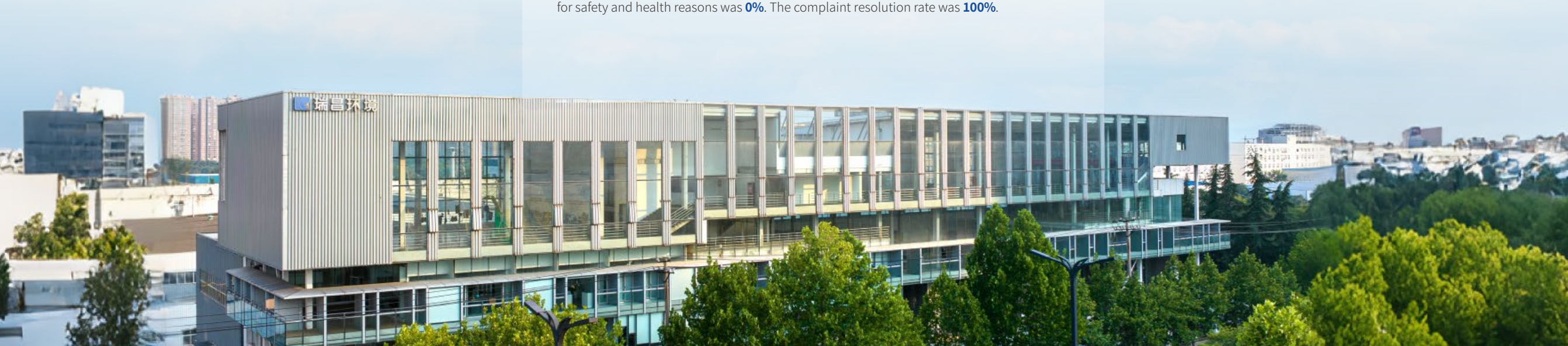
- In 2025, the Company reduced its operational carbon emissions by **20.79%** compared to the base year of 2024.
- In 2025, the total self-generated photovoltaic electricity was **771,890 kWh**, of which **607,250 kWh** was utilized for internal operations, and **164,640 kWh** was supplied to the public grid.
- In 2025, all operational sites have obtained ISO 14001:2015 Environmental Management System certification, achieving **100%** coverage.
- In 2025, the Company's steel utilization rate increased by nearly **12%** compared to 2024.
- In 2025, air emission, wastewater, and waste management complied with regulatory standards, with no environmental compliance incidents recorded.

Social

- The Company has implemented an equity incentive plan. In 2025, **29** employees held company shares, accounting for **6.09%** of the total employees.
- In 2025, the Company recognized **27** Gold Star Employees, **21** Most Promising Newcomers, **5** Outstanding Mentors, **7** Dream Builders Awards, and **1** President's Special Award.
- In 2025, the Company conducted a total of **154** employee training sessions, covering **5,682** person-times. Total employee training hours were **12,581**, with average training hours per employee at **26.43**. Employee training coverage reached **100%**.
- In 2025, the Company conducted **119** occupational health and safety (OHS) risk identifications and hazard inspections, with a **100%** completion rate for OHS-related risk and hazard rectification.
- In 2025, the employee OHS training completion rate was **100%**. The Company organized a total of **61** health and safety training sessions, with total training hours of **4,395**, total person-times of **2,234**, and average training per person of **9.23** hours.
- In 2025, the Company's investment in Research and Development (R&D) and innovation was **32.32** million RMB, accounting for **6.44%** of main business revenue.
- Among companies controlled or partially controlled by Ruichang International: **2** companies were certified as High-Tech Enterprises, **1** company was recognized as a National-Level Specialized, Refined, Distinctive, and Innovative (SRDI) "Little Giant" enterprise, and **1** company was recognized as a Provincial-Level SRDI Small and Medium-sized Enterprise (SME).
- In 2025, the total number of new patent applications was **66**, new patents granted was **38**, and the cumulative total of valid patents reached **245**.
- In 2025, there were no product recalls. The proportion of sold or shipped products recalled for safety and health reasons was **0%**. The complaint resolution rate was **100%**.

Governance

- There are **3** female board members, exceeding **1/3** of the total board members.
- In 2025, there were no material incidents of business ethics violations.
- In 2025, the Company conducted **4** specialized information security inspections, with an information security vulnerability rectification rate of **100%**.
- In 2025, there were no material information security and/or privacy breach incidents.



About Ruichang International

Corporate Profile

Ruichang International Holdings Limited is a global, diversified energy-saving and environmental protection technology enterprise focused on the industrial thermal energy sector. Driven by multiple product lines for sustained growth, it leverages core equipment manufacturing capabilities, modular design for packaged units, and systems engineering expertise to provide global clients with green, sustainable, energy-saving, and emission-reduction system and modular unit technology solutions.

The Company excels in technological innovation, holding over 240 national patents. It continuously seeks partnerships with influential enterprises. Its subsidiary Luoyang Ruichang Environmental Engineering Co., Ltd. has signed a *Strategic Alliance Agreement* with Honeywell (China) Co., Ltd. Through its global footprint and diversified product line strategy, Ruichang International holds a strong competitive advantage within the industry.

Milestones in Ruichang International's Development

1986

Founded as Luoyang Shuangtui Petroleum Machinery Fittings Factory (Ruichang's predecessor), engaged in machine tool repair and supply services for the Sinopec Luoyang Petrochemical Engineering Company Research Institute.

1994

Established Luoyang Ruichang Petrochemical Equipment Co., Ltd.; recognized as a National High-Tech Enterprise.

2000

Built China's first thermal-state testing platform for petrochemical burners.

2008

Applied for and obtained the Company's first National Invention Patent; received an Outstanding Patent Award.

2015

Co-established and commissioned the world-class Combustion Test Center with Honeywell (the largest in the Asia-Pacific region).

2013

Awarded the "Henan Famous Trademark" title; signed a strategic alliance agreement with Honeywell and its subsidiary UOP Callidus.

2012

Independently developed and launched the world's first REGLASS glass plate heat exchanger.

2009

Co-authored the national petrochemical industry standard *Experimental Testing Procedures for Burners Used in Petrochemical Tubular Heaters*.

1986-2025

2016

Clearly defined the Company's product line strategy; approved and established a Postdoctoral Workstation; co-authored the national petrochemical industry standard *Technical Conditions for Burner Engineering in Petrochemical Tubular Heaters*.

2018

Officially renamed Luoyang Ruichang Environmental Engineering Co., Ltd.; launched an Equity Incentive Plan.

2019

Company obtained its first international patent authorization.

2020

Established the Ruichang Holdings Group structure; Richler Petrochemical Engineering established its module technology team; invested in and acquired controlling interest in a Canadian subsidiary.

2021

Took an equity stake in a Brazilian subsidiary, completing filing procedures; co-authored the national petrochemical industry standard *Burners for Fired Heaters in Refining Units*.

2025

Luoyang Smart Factory completed and commissioned; China's first agricultural waste phosphorus recovery project launched in Huangshan; granted exclusive authorization for Callidus Aftermarket Business (AMB) service in the Chinese market; cumulative valid patents reached 245, including 5 international invention patents.

2024

Ruichang International Holdings Limited listed on the Main Board of the Hong Kong Stock Exchange (Stock Code: 1334.HK).

2023

Luoyang Ruichang Environmental Engineering was selected as a National-Level "Little Giant" Specialized, Sophisticated, Distinctive, and Innovative Enterprise; Richler Petrochemical Engineering was recognized as a Shanghai Specialized, Sophisticated, Distinctive, and Innovative SME; Richler Petrochemical Engineering obtained an Engineering Design Qualification Certificate (Grade B for Chemical & Petrochemical Industry).

Corporate Vision

Focus on atmospheric treatment and energy-saving solutions for industrial thermal energy engineering
Be a respected energy conservation and environmental protection technology company



Corporate Mission

Ruichang Blue, China Blue
Contribute Ruichang's value to improving China's environment.
Assist global clients in achieving green, sustainable development.



Core Values

Customer-oriented	Self-Learning and Self-Motivated
Maintain Empathy	Full of Passion and Decision-Making Ability
Complete Communication via the Shortest Path	Provide Feedback in Real Time
Open-Minded and Embrace Change	Enjoy Work

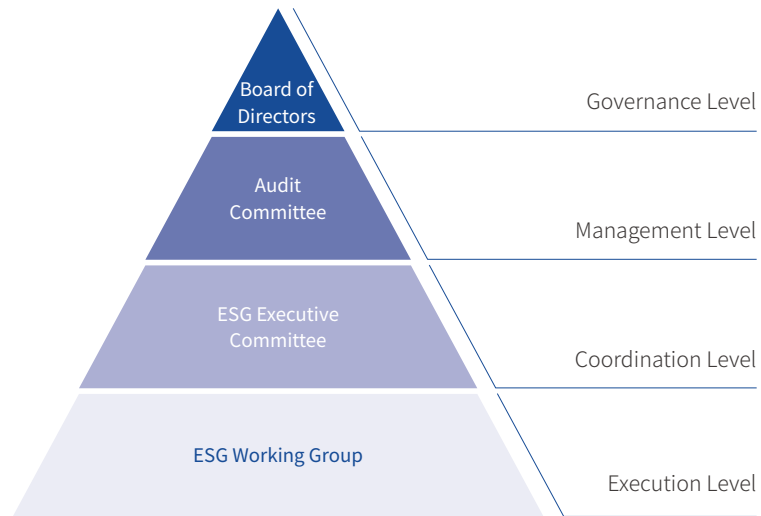


Sustainability Management

Sustainability Governance

Ruichang International has established and continuously refines its ESG management system, clarifying the ESG governance structure, responsibilities, and processes. This strengthens collaborative sustainability management across all levels and functional departments, enhancing the Company's overall sustainability performance.

Ruichang International's ESG management system comprises a four-tier, top-down governance structure: the Board of Directors, the Audit Committee, the ESG Executive Committee, and the ESG Working Group.



Board of Directors	Holds ultimate oversight responsibility for ESG matters	<ul style="list-style-type: none"> • Regularly listening to reports from the Audit Committee on ESG matters and providing oversight. • Approving and issuing ESG reports and other disclosure documents.
Audit Committee	Responsible for managing and making decisions on Company ESG matters, reporting to the Board, and being accountable to it	<ul style="list-style-type: none"> • Reviewing the Company's ESG management policies, strategies, and frameworks, and overseeing the Company's ESG performance and achievement of goals to ensure compliance with applicable laws, regulations, exchange supervision requirements, and international standards. • Reviewing communication methods and outcomes with stakeholders related to the Company, assessing and managing potential impacts and risks associated with ESG-related issues on the Company's business. • Reviewing the Company's ESG report and related disclosure documents and reporting to the Board of Directors.
ESG Executive Committee	Group Vice President by the Director and Executive Vice President, with members comprising heads of various functional departments and subsidiaries	<ul style="list-style-type: none"> • Coordinating and advancing the Company's ESG initiatives, leading the ESG Working Group to comprehensively implement ESG work. • Developing and reviewing the Company's ESG policies and codes of conduct to ensure the implementation of all ESG policies. • Reviewing the identification of ESG risks and opportunities. • Reviewing the Company's ESG work plans/schedules, ESG reports, and reviewing and supervising the work of the ESG Working Group.
ESG Working Group	Comprised of representatives from various functional departments	<ul style="list-style-type: none"> • Drafting ESG management systems, policies, and implementing relevant measures. • Leading ESG information disclosure. • Conducting identification of ESG risks and opportunities. • Developing annual ESG work plans/schedules. Coordinating and advancing the execution of the Company's ESG strategies, goals, and work plans. • Leading subsidiaries, divisions, and production sites in the implementation of specific ESG initiatives.

Ruichang International Sustainability Governance Structure

Stakeholder Engagement

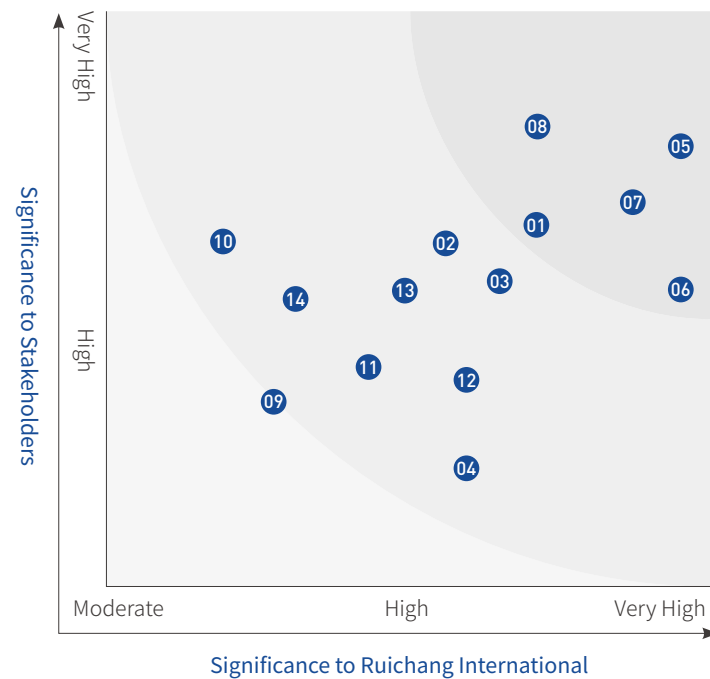
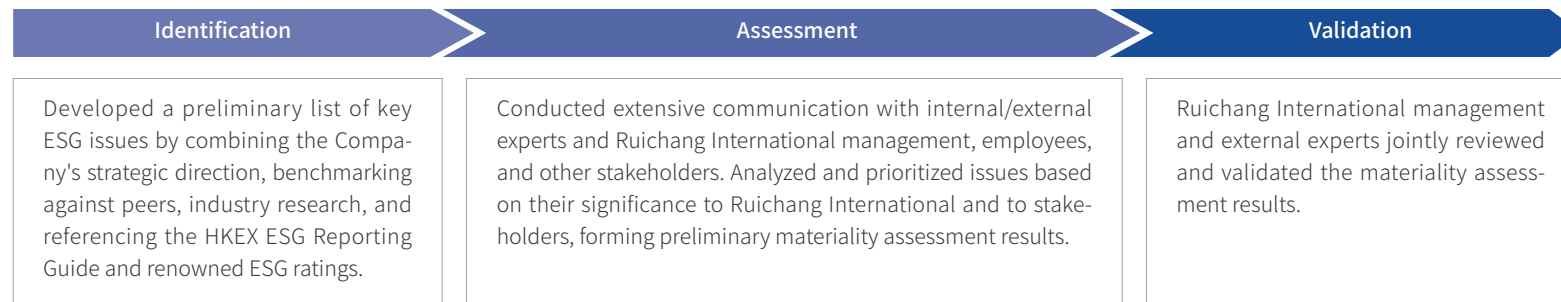
Identifying and engaging with stakeholders is crucial to Ruichang International's sustainability management. Our key stakeholders include Governments and Regulators, Shareholders and Investors, Customers, Suppliers, Employees, Public Community, and Higher Education Institutions/ Industry Organizations. Through diverse communication channels, we maintain close communication and cooperation with all key stakeholders, timely understand their concerns and expectations, and continuously improve the effectiveness of our sustainability work.

Key Stakeholder Group	Key Concerns and Expectations	Communication Channels and Frequency
 Governments and Regulators	<ul style="list-style-type: none"> • Legal and compliant operations • Responding to national strategies • Driving economic development • Maintaining market order 	<ul style="list-style-type: none"> • Discussion and exchange (irregular) • Supervision and inspection (irregular) • Organize visit (irregular) • Daily work report and communication (irregular) • Participating in training (irregular)
 Shareholders and Investors	<ul style="list-style-type: none"> • Effective corporate governance • Stable economic performance • Timely information disclosure 	<ul style="list-style-type: none"> • General meeting of shareholders (every year) • Regular reports and announcements (quarterly/annual reports, irregular announcements) • Investor relations activities (irregular)
 Customers	<ul style="list-style-type: none"> • High-quality, safe, and innovative products • Convenient, user-friendly services 	<ul style="list-style-type: none"> • Social media (irregular) • Customer visit (irregular) • Customer satisfaction survey (annually)
 Suppliers	<ul style="list-style-type: none"> • Sustainable procurement • Integrity in cooperation 	<ul style="list-style-type: none"> • Supplier review and evaluation (annually) • Daily work communication (irregular)
 Employees	<ul style="list-style-type: none"> • Protection of legal rights and interests of workers • Equal, diverse and inclusive working environment • Well-established salary and welfare system • Clear training plan and career development path • Occupational health and safety 	<ul style="list-style-type: none"> • Employee education and training (irregular) • Staff communication activities (irregular) • Internal communication platform (real-time) • Employee grievance channel (real-time)
 Public Community	<ul style="list-style-type: none"> • Favorable community development • Philanthropic activities 	<ul style="list-style-type: none"> • Community volunteer activities (irregular) • Charitable donation (irregular) • Organizing condolences (irregular)
 Higher Education Institutions/ Industry Organizations	<ul style="list-style-type: none"> • Joint R&D and innovation • Active industry participation 	<ul style="list-style-type: none"> • Project cooperation (irregular) • Industry discussion (irregular)

Materiality Assessment

Materiality assessment forms an essential foundation for Ruichang International to practice sustainability and establish its sustainability strategy. We conducted systematic stakeholder engagement and performed a materiality assessment from two dimensions: "Significance to Ruichang International" and "Significance to Stakeholders". This process helped identify key issues of common concern to stakeholders and with significant impact on Ruichang's sustainable development, forming the Materiality Matrix.

Materiality Assessment Process



Ruichang International Materiality Matrix

Aspect	Key Material Issues	Other Material Issues
Environment	01 Climate Change Adaptation	02 Environmental Management
	05 Clean Technology	03 Emission Management
	/	04 Resource Management
	07 Innovation, Research and Development	09 Sustainable Supply Chain
Social	08 Product Stewardship	12 Social Welfare
	06 Employee Care	/
Governance	/	11 Corporate Governance
	/	10 Risk Management
	/	13 Business Ethics
	/	14 Data and Privacy Protection

Furthermore, Ruichang International actively responds to and implements the United Nations Sustainable Development Goals (UN SDGs), integrating relevant goals into its sustainability management to contribute to their achievement.



Green Technology, Clean Guardianship of Ecology

Clean Technology
Climate Change Adaptation
Environmental Management
Emission Management
Resource Management



Upholding Integrity and Strengthening Governance Foundations

Corporate Governance
Risk Management
Business Ethics
Data and Privacy Protection



Alignment with UN Sustainable Development Goals



Ingenuity Empowerment, Shared Responsibility

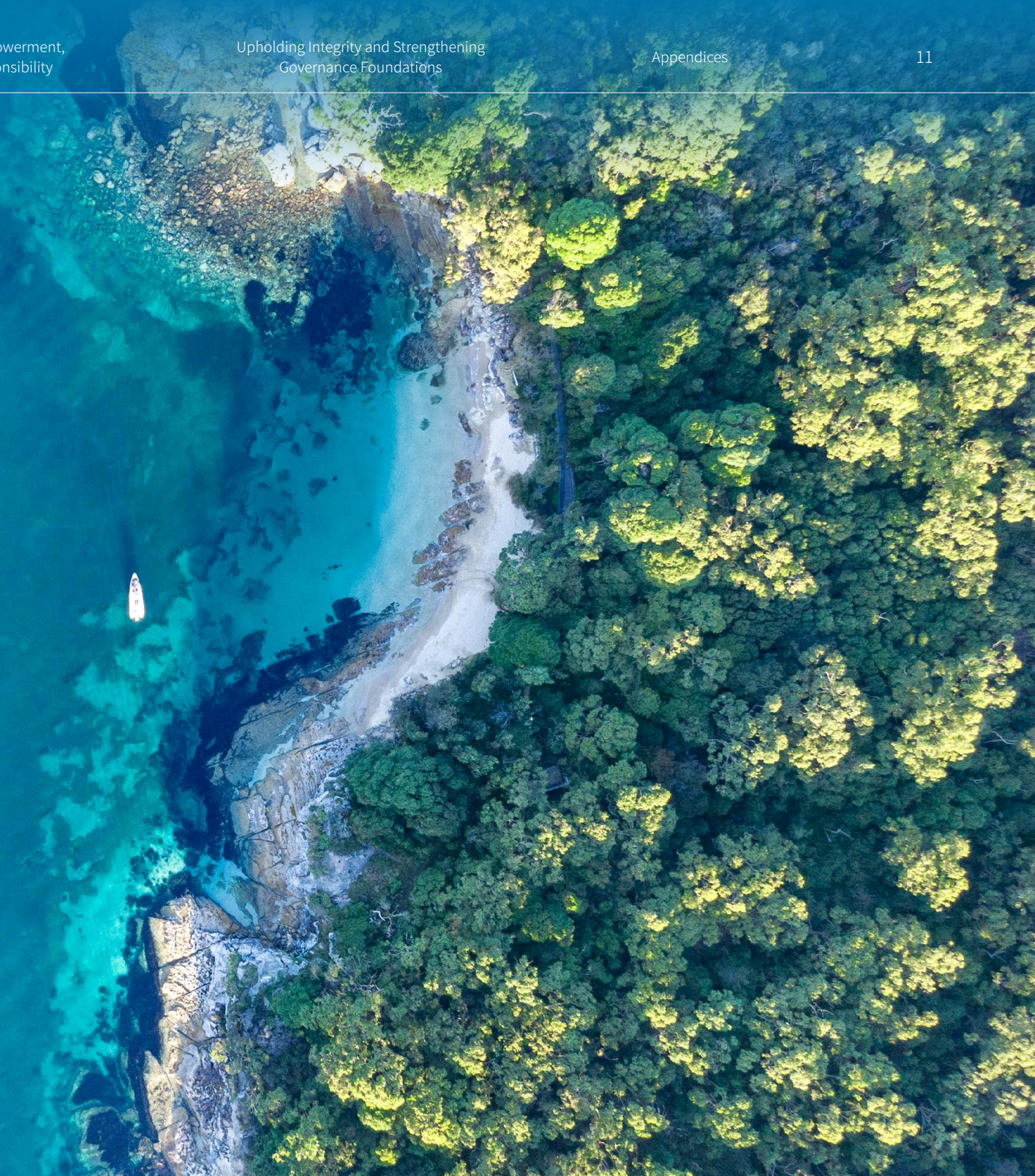
Employee Care
Innovation, Research and Development



Product Stewardship
Sustainable Supply Chain
Social Welfare

Green Technology, Clean Guardianship of Ecology

The detrimental impacts of climate change and environmental pollution continue to intensify globally. The pursuit of environmental sustainability and the response to global climate challenges have become a shared societal consensus. Ruichang International, deeply engaged in the field of energy-saving and environmental protection technologies, is committed to integrating green and energy-efficient principles into the entire product development and technological innovation process. Anchored by a diversified technology portfolio, the Company fulfills its pledge for green development.



Clean Technology

In September 2025, the National Energy Administration and other authorities officially issued the *Guiding Opinions on Promoting the High-Quality Development of Energy Equipment*, outlining key tasks such as "accelerating the transformation and upgrading of energy exploration and development equipment", "enhancing the quality and efficiency of energy conversion equipment", "promoting the large-scale application of energy storage equipment", "strengthening technological breakthroughs in energy transmission equipment", "advancing the digitalization and intelligent upgrading of energy equipment", and "facilitating the green and high-end development of energy equipment". This guidance charts a transformation path of "efficiency, cleanliness, low-carbon, and circularity" for the energy equipment manufacturing sector. As a technology enterprise with nearly 40 years of deep expertise in petrochemical, industrial thermal engineering, and air pollution control, Ruichang International, supported by over 240 patented technologies, offers core capabilities including sulfur recovery, waste heat recovery, catalytic cracking equipment, and process burners. These offerings align closely with the requirements of the Guiding Opinions, supporting the industry in responding to policy implementation.

The Company's clean technology strategy is deeply integrated with the national "Dual Carbon" goals, driving the industrialization of clean technologies through innovation. Leveraging a multidisciplinary professional technical team and full-process R&D and conversion capabilities, Ruichang focuses on pioneering research, tackling key technological challenges, promoting industrial applications, and delivering scenario-based solutions. Its key focus areas include energy storage, clean energy substitution, pollutant emission reduction, energy efficiency, and resource recovery from waste.

The Company's Core Business

Oil and Gas Processing

- Sulfur Recovery Systems and Equipment
- Incineration Systems and Equipment
- Refining Units and Equipment
- Oil/Gas Field Surface Handling Systems

Thermal Management

- Low NOx Burners
- Flare Systems
- Waste Heat Recovery
- Cold and Thermal Storage Systems

Biomass Energy

- Livestock Manure Resource Utilization
- Biomass Steam Generation

Oil and Gas Processing

Sulfur Recovery

Ruichang International's sulfur recovery systems have been deployed in over 300 projects, achieving total sulfur recovery rates of 99%-99.5%, with some processes exceeding 99.8%. The newly developed "Low-Concentration Acid Gas Sulfur Recovery System" in 2025 enhances recovery efficiency while reducing the operational load and energy consumption of desulfurization systems through a synergistic multi-unit design of "oxidation reaction - tail gas capture - sulfur interception - desulfurization".

Key Technical Highlights

- ➔ **High Recovery Efficiency:** Total sulfur recovery rates of **99%-99.5%**, with optimized processes achieving **≥ 99.8%**, placing them at an industry-leading level.
- ➔ **Outstanding Economics:** Process structure is streamlined, with investment costs reduced and controllable.
- ➔ **Technological Innovation:** Utilizes patented domestic composite catalysts; employs medium-pressure steam generated in-process for reheating; enhances main furnace temperature via preheating fuel/air for low-concentration H₂S streams to ensure complete decomposition of hydrocarbons and ammonia; the selective reduction stage requires no external hydrogen source, as hydrogen generated in the combustion reaction section suffices.

Sulfur Recovery System deployed at a Chemical Company in Henan

The sulfur recovery system at a chemical company in Henan Province employed the independently developed "RCSR-3 Two-Stage Claus + Selective Hydrogenation + Selective Oxidation" process from Ruichang International. This system was designed to process acid gas containing high concentrations of H₂S from upstream units. It was equipped with a tail gas incinerator and a tail gas hydrogen peroxide desulfurization unit, which converted SO₂ in the flue gas from the tail gas incinerator's steam generator outlet into dilute sulfuric acid. The dilute sulfuric acid was subsequently utilized in other plant facilities.

This unit achieved a sulfur recovery rate exceeding 99%. The process gas was efficiently reheated using medium-pressure steam generated on-site. The SO₂ content in the flue gas emitted from the tail gas desulfurization unit was maintained below 35 mg/Nm³, meeting environmental ultra-low emission standards. Notably, the process generated no wastewater, aligning with green production requirements. Furthermore, the quality of the by-product sulfur complies with the requirements for first-grade products as specified in *GB/T 2449.2-2015 Industrial Sulfur - Part 2: Liquid Products*.



Onsite System

Waste Gas, Wastewater, and Waste Incineration Treatment

Building on over three decades of combustion expertise, Ruichang International has established a comprehensive waste incineration and flue gas treatment technology system capable of handling various pollutants, providing end-to-end exhaust gas solutions.

Incineration and Flue Gas Treatment System

High-Efficiency Incineration Technology

Exhaust gas preheating up to 500° C reduces fuel consumption by ~60%; integrated "incineration-heat exchange" furnace structure ensures high thermal efficiency and economic benefits.

Resource Conversion Capability

Proprietary waste-to-resource conversion technology can increase energy efficiency by 30% and by-product yield by 20%, transforming waste into valuable resources.

Integrated Purification Process

Desulfurization employs adaptable wet and semi-dry processes; denitrification utilizes Selective Catalytic Reduction (SCR), Selective Non-Catalytic Reduction (SNCR), and hybrid technologies for diverse conditions; dust removal uses pulse baghouse or electrostatic precipitators, with PTFE membrane bags offering high efficiency for temperatures below 200° C.

Specialized Treatment Capability

For CO-rich tail gas in industries like catalytic cracking, methanol, ethylene, and steel, dedicated combustion control and waste heat recovery systems ensure safe treatment while enabling energy reuse.

Waste Incineration System Applications

In November 2025, the "Waste Gas and Liquid Incineration System" for the Carbon Dioxide-Ethane Coupled Carbonylation Integrated Project (Phase I) of Shaanxi Xinsheng Green Energy New Materials Co., Ltd., constructed by Ruichang International, was successfully put into operation. This system represents the world's first industrial facility utilizing carbon dioxide for carbonylation reactions. The project focuses on the "dual-carbon" goals and the need for refined development in the olefin industry chain. By adopting innovative technological pathways, it enables the resource utilization of carbon dioxide, marking a milestone in advancing the green transformation of the petrochemical industry and building a low-carbon circular economy system.



Onsite System



Catalytic Cracking

Catalytic cracking is a critical process in petrochemicals for oil conversion. The efficiency and stability of its equipment directly impact production economics and energy consumption. Ruichang's Catalytic Cracking core equipment is dedicated to optimizing gas flow distribution, enhancing reaction efficiency, reducing energy use, and extending unit lifespan.

Key Equipment and Performance Advantages

→ Low-Pressure Drop Water Seal Drum



Pioneered the low-pressure-drop concept in domestic Catalytic Cracking units, reducing pressure loss by 50%–80% compared to conventional drums; new rotary-type drum pressure drop can be below 300 Pa, significantly lowering system energy consumption.

→ Low-Pressure Drop Auxiliary Combustion Chamber



Pressure drop reduced by 60%–90% compared to older models, stably maintained below 1,000 Pa; successfully applied in large-scale Fluidized Catalytic Cracking (FCC) units like PetroChina Guangdong's 3.6 million t/a unit.

→ Supporting Component System



Includes pressure reduction orifice plates, main air distribution systems, RT special composite wear-resistant nozzles, and energy recovery flues. Comprehensive optimization enhances operational stability, economics, reduces equipment wear, and extends running cycles.

Catalytic Cracking Equipment Application

A major domestic petrochemical plant implemented Ruichang's FCC upgrade solution, significantly improving gas flow efficiency, reducing equipment wear, and effectively extending the operating cycle. This led to improved product yield, lower maintenance costs, and dual optimization of performance and economics, providing robust support for efficient FCC operation.



Onsite System



Thermal Management

Low Nitrogen Oxide (NOx) Burner

Leveraging 30 years of combustion technology, Ruichang's low NOx burners address NOx exceedance through precise combustion control technology. Continuous innovation in heating and combustion processes provides critical pathways for industrial energy saving, emission reduction, and green transformation.

Key Technical Highlights

<p>Staged Combustion Technology</p>	<p>Optimizes fuel-air mixing efficiency, reducing thermal NOx formation.</p>
<p>Flue Gas Recirculation (FGR)</p>	<p>Effectively lowers flame temperature, inhibiting NOx emissions.</p>
<p>Exceptional Emission Performance</p>	<p>Burner NOx emissions can be below 50 mg/Nm³, far below the national standards.</p>

Low NOx Burner

The synthetic ammonia primary reformer nitrogen oxide burner technical service project of Sichuan Meifeng Chemical Technology Co., Ltd. adopted Ruichang International's ultra-low NOx combustion technology. Following the implementation of this technology, the NOx emission concentration in the flue gas of the synthetic ammonia plant's primary reformer significantly decreased from the pre-retrofit level of 116 mg/Nm³ to approximately 40 mg/Nm³, representing a reduction of 65.5%. This results in an annual reduction of nitrogen oxide emissions by about 36 tons.

The ultra-low emission level achieved through this technology is at the forefront of domestic standards, demonstrating clear advantages compared to similar products. The application of this advanced technology not only improves environmental performance but also significantly enhances the enterprise's market competitiveness, laying a solid foundation for its expansion from domestic to global markets.



Onsite System



Waste Heat Recovery

Addressing complex conditions like "high-temperature flue gas, low-temperature exhaust" in petrochemical plants, Ruichang developed composite metal-glass heat exchange modules. The special glass material withstands temperatures exceeding 700° C, overcoming the "prone to corrosion, short lifespan" issues of traditional metal heat exchangers, significantly extending equipment life. This enables cascaded heat recovery and deep utilization, curbing energy loss at the source and reducing carbon intensity per unit product.

Key Technical Highlights

High-Temp Section (Metal Module)	For inlet gas <600° C, outlet >150° C, balancing durability and efficient heat transfer.
Low-Temp Section (Glass Module)	Stable operation below 160° C, overcoming corrosion limits of metal, outlet temperature can drop to ~80° C.
Corrosion Resistance and Sealing	Innovative segmented design and sealing technology prevent leakage, condensation, and corrosion; design life 8-10 years, maintenance costs reduced by over 50%.
Outstanding Environmental Benefits	Optimized for gas-gas, gas-liquid, liquid-liquid scenarios; comprehensive energy efficiency improved by 15%-30%. Cooling flue gas below 80 ° C condenses soluble SO _x , chlorides, and some particulates, reducing downstream treatment load and pollutant emissions.

Waste Heat Recovery System Applications

A Sinopec project using Ruichang's modified polymer tube heat exchangers recovered equipment waste heat into circulating water, annually saving over 3 million Nm³ of natural gas and approximately reducing CO₂ emissions by 6,000 tons, which achieved energy conservation and emission reduction at the production source.

A Guangdong paper mill project for desulfurization wastewater heat recovery used modified polymer heat exchangers to recover waste heat for heating biochemical water, stabilizing its temperature, reducing steam consumption, and addressing strong corrosion. Annual comprehensive savings approximately reached 5 million RMB.



Onsite System

A Qingdao heating company project, utilizing corrosion-resistant glass tube heat exchangers, recovered waste heat from pre-desulfurization flue gas to pre-heat return water for heating systems, increasing 155 t/h of heating water by ~15° C. Annual heating cost savings are approximately 1.4 million RMB per heating season.



Onsite System

For a PetroChina ethylene plant, Ruichang's integrated high-low temperature solution, combining glass modules with digital monitoring, improved thermal efficiency by >10% and significantly lowered exhaust temperature, meeting national ultra-low emission standards.



Heat Exchange (Glass Module)



Industrial plumes are visible plume-shaped pollutants from industrial processes in high-energy-consumption industries like coal-fired power, steel, chemicals, and cement. Ruichang developed the proprietary REGLASS non-heating phase-change condensation technology, using ambient air as a cooling source to treat wet flue gas. This water-saving, emission-reduction technology condenses and collects moisture while removing water-soluble salts, ultra-fine particulates, and acidic gases, significantly reducing particulate and acid gas emissions and eliminating colored plumes.

Flue Gas Treatment

Ruichang implemented a slag flushing waste steam treatment system for two blast furnaces at a steel plant in Tangshan, Hebei, effectively treating high-temperature waste steam and "white plume" pollution from slag flushing. Results post-operation:

Environmental

Plume elimination rate consistently >90% annually, moisture content reduced >50%; particulate and SO₂ emissions controlled within 10 mg/Nm³ and 35 mg/Nm³, fully meeting local emission standards.

Water Conservation

15 t/h of condensate water recovered and reused in the cooling water system.

Energy Saving/Economic Benefits

Compared to traditional heated condensation, annual electricity savings of 1.815 million RMB, with carbon reduction exceeding 2,000 tons.



Comparison of Industrial Plumes Before and After System Employment

In the future, the Company will advance plume treatment projects across three dimensions: 1) Deepening technology iteration for large systems (>300,000 Nm³/h) and optimizing materials/structures; 2) Accelerating scenario expansion into high-corrosion flue gas areas like chemicals, metallurgy, and hazardous waste; 3) Driving digital innovation with smart monitoring platforms for precise control. Strategic partnerships with industry leaders will also be deepened.

Energy Storage Systems

Guided by the *Guiding Opinions on Promoting the High-Quality Development of Energy Equipment*, building a multi-energy complementary storage system is key to transforming the energy mix and improving efficiency. Ruichang focuses on R&D and application of energy storage technologies, developing systems tailored for industrial scenarios. Core technologies like high-temperature molten sulfur storage and phase-change energy storage enable efficient energy storage, conversion, and utilization, empowering green, low-carbon energy development.

Ruichang's phase-change energy storage technology stores/releases cold/heat via Phase Change Material (PCM) solidification/melting. Modular products have been commercially applied in cold storage, achieving 20-25% energy saving and economic benefits through "peak shaving and valley filling". Future potential applications include high-energy-consumption scenarios like data centers, reducing reliance on single electric storage. Coupling with battery storage can form a multi-energy system for flexible dispatch of renewable power, enhance system stability, and improve overall economic efficiency.

PCM Empowers Green and Energy-saving Renovation of Meituan's Cold Chain Warehouses

As the core self-operated instant retail business of Meituan, Xiaoxiang Supermarket (formerly known as Meituan Grocery) has expanded to nine cities, including Shanghai, Beijing, Shenzhen, and Guangzhou, since its launch in early 2019. Relying on over a thousand neighborhood service stations, it has established an instant delivery network covering a 3-kilometer radius around communities. Each service station is equipped with self-built cold storage facilities, forming a large-scale cold chain warehousing scenario. In response to the specific characteristics of Xiaoxiang Supermarket's cold storage operations, Ruichang International customized a phase-change energy storage solution and implemented a green energy-saving demonstration application.

This project achieved intelligent regulation of refrigeration loads and efficient energy utilization through the synergistic integration of phase-change energy storage technology with the cold storage refrigeration system, effectively reducing the operational energy consumption of the cold storage facilities. By the end of 2025, the project had been successfully deployed and put into operation across 15 sites. Based on actual operational data, each site achieved an average annual energy-saving rate of over 20%, significantly reducing electricity consumption and operational costs. Additionally, it lowered carbon emissions associated with energy use, providing a replicable and scalable practical case for low-carbon operations in the cold chain segment of the instant retail industry.

To enable precise, intelligent management of cold chain storage projects, Ruichang developed the Ruichang Smart Energy - Cold Storage Digital Platform.

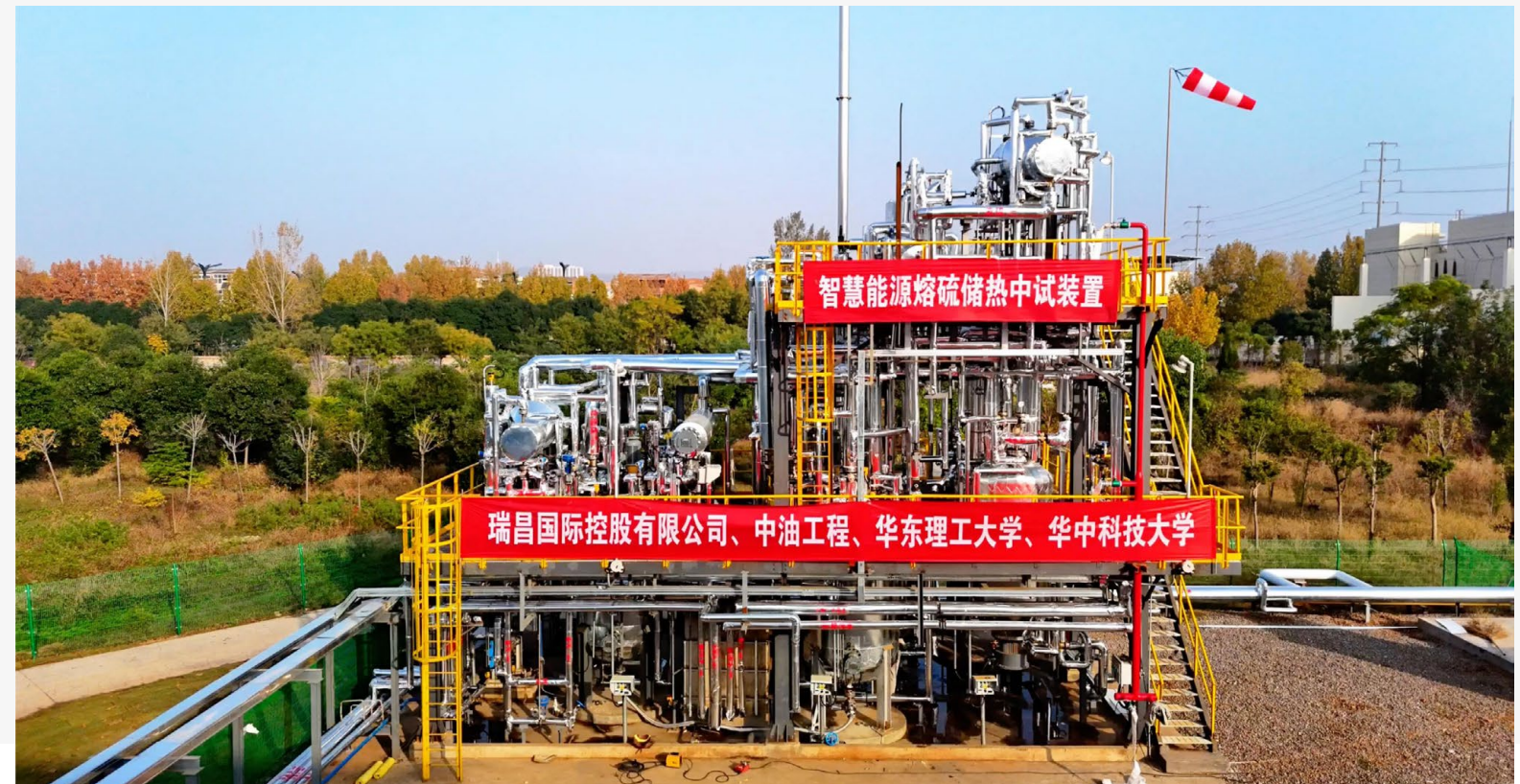
Ruichang Smart Energy - Cold Storage Digital Platform

The Cold Storage Digital Platform is specifically designed to provide one-stop intelligent control and management capabilities for cold storage and cold chain scenarios. It establishes a full-chain management loop spanning "data collection—real-time monitoring—intelligent analysis—decision-making output." Its core functions encompass six major modules: project overview, project management, report center, message center, personal center, and QR code enrollment. The platform's key advantages are as follows:

Real-Time Monitoring	Accurately captures key data such as cold storage temperature, cargo status, and energy consumption
Intelligent Optimization	Analyzes energy-saving operation information, optimizes cold storage conditions, and achieves both energy and cost savings
Data Statistics	Precisely calculates saved electricity consumption and the corresponding cost reductions
Model Building	Constructs energy consumption models for cold storage facilities, analyzing the proportion of energy use at each operational stage
Report Generation	Produces standardized data reports and builds an operational database for the cold storage industry

High-temperature molten sulfur thermal storage technology utilizes molten sulfur as a heat transfer/storage medium to achieve thermal energy storage and release, making it suitable for scenarios such as renewable energy consumption. This technology is a key R&D project in the Company's deep focus on energy conservation, environmental protection, and energy storage. Since April 2025, Ruichang International has concentrated resources to advance R&D and commercialization of this technology. Through systematic efforts across multiple dimensions, the Company has progressively overcome technical bottlenecks and achieved significant phased progress.

In terms of technological R&D and experimental advancement, the molten sulfur thermal storage project has successfully entered the pilot testing phase, while further deepening fundamental research and small-scale testing. The Company has established a 2-ton molten sulfur thermal storage pilot test platform, focusing on comparative research and experimental validation of both single-tank modular routes and dual-tank circulation system routes. Through this platform, the stable production of medium-pressure steam at 4MPa and 380° C has been successfully achieved. Additionally, systematic testing of thermal efficiency in the storage system, along with performance evaluation and optimization studies on key equipment such as heat exchangers and electric heaters, has been conducted. This effort has accumulated critical experimental data and practical experience to support the industrialization of the technology. By the end of 2025, the R&D project had successfully secured three related patents.



Pilot Plant for Molten Sulfur Thermal Energy Storage

In terms of market positioning and collaborative empowerment, Ruichang International has simultaneously advanced market research and technical cooperation. Market research focuses on two core application scenarios: renewable energy consumption and industrial steam supply. Ruichang International have conducted in-depth technical solution exchanges with key industry enterprises, including China National Offshore Oil (CNOOC) Chemical Hainan Low-Carbon Center, CNOOC Ningbo Daxie Petrochemical, and PetroChina Xinjiang Company. To strengthen industry-academia-research integration and cross-industry collaboration, we have established deep partnerships with specialized institutions such as China Petroleum Engineering East China Design Institute, North China Design Institute, and Xinjiang Design Institute. Together, we are engaged in core tasks, including process package development and key equipment R&D. Furthermore, the Company actively participates in various energy storage industry conferences, including the "2025 China Solar Thermal Power Conference", "2025 Compressed Air Energy Storage and Heat Exchange Forum", "The 12th China International Concentrated Solar Power (CSP) Conference & CSPPLAZA Annual Conference" and the "2025 International Renewable Energy Heating Technology Conference". Through these engagements, we stay updated on the latest technological trends in thermal energy storage, explore potential application scenarios, identify the differentiated advantages of our technology compared to similar products, and clarify the direction for future market competition and technology promotion.

Clean Energy

Biomass Treatment

Ruichang's proprietary, high-efficiency, environmentally friendly gasifier uses entrained-flow technology to convert biomass, agricultural/forestry waste, and other carbon-containing solid waste into high-value clean energy for industrial heating, avoiding landfill or inefficient, polluting incineration. Integrated waste heat recovery modules convert excess heat into high-pressure steam, further enhancing overall energy efficiency.

Huangshan Phosphorus-Containing Waste Recovery Project

Livestock manure is often treated via composting, facing resource misallocation and market challenges. Ruichang invested in China's first agricultural waste phosphorus recovery demonstration project in Huangshan. Upon completion, it is expected to process over 150,000 tons of manure annually, producing 10,000 tons of soil conditioner and 30,000 tons of phosphorus-enriched concentrate annually.

Ruichang's gasifier can process phosphorus-containing agricultural waste like manure, extracting phosphorus during energy conversion. This addresses phosphorus pollution from waste accumulation while producing high-purity phosphorus fertilizer by-products.

- ➔ First-of-its-kind agricultural waste phosphorus recovery project in China.
- ➔ Converts phosphorus-containing waste → high-value phosphorus by-products, simultaneously recovering waste heat, nitrogen, phosphorus, and other nutrients.
- ➔ Reduces manure accumulation, environmental impact of composting, and water pollution.
- ➔ Promotes standardized, green development of the livestock industry.
- ➔ Recognized and supported by local agricultural and environmental authorities as a demonstration project.

Zero-Carbon Industrial Park

Efficient Clean Energy Utilization: Building a Zero-Carbon Park Benchmark

Aiming for zero-carbon industrial park development, the Company uses the Shangku High-Tech Zone in Korla, Xinjiang, as a pilot. Through integrated application of diverse clean energy technologies, the park's energy structure is deeply optimized, and carbon emissions are substantially reduced.

A zero-carbon green steam supply system, coupling biomass combustion with high-temperature molten fluid thermal storage, replaces a net heat demand equivalent to 54,700 tons of standard coal, supplying about 50 t/h of green steam. Ruichang's dual-source hybrid electric heating technology, powered by fluctuating green electricity coupled with natural gas, achieves a 10% substitution rate for the park's natural gas consumption (equivalent to 13,170 tons of standard coal), promoting low-carbon energy transition. In 2025, this contributed to an estimated 228,300 tons of CO₂ reduction, equivalent to over a 30% reduction from the park's 2024 baseline.

Exploring further clean energy applications, the Company is developing photo-semiconductor photoelectrochemical water-splitting for green hydrogen production, leveraging Xinjiang's abundant solar resources. The project is expected to be implemented in 2026, aiming to establish a zero-carbon green hydrogen supply system where every 5,000 tons of green hydrogen could replace a hydrogen production demand equivalent to 32,000 tons of standard coal.

Beyond core technologies above, the Company implements other clean tech initiatives: To address challenges in the coffee industry—such as pollution from coarse coffee grounds disposal, difficulties in storing wet grounds, and low resource utilization rates—Ruichang International leveraged its technological expertise to collaborate with clients in developing a green drying and resource recovery solution for coffee grounds. This initiative supported efficient recycling and circular use of coffee waste. The Company advanced the green transition of production materials by replacing certain paint components with water-based alternatives. This solution successfully passed experimental verification in 2025 and was scheduled for formal implementation in 2026, thereby reducing pollution emissions at the source during production processes. Looking forward, Ruichang International remains committed to deepening research, development, and scenario-based application of clean technologies, fostering deeper integration of environmental benefits and industrial value.

Sold products and projects' emission reduction performance in 2025

Greenhouse Gas Emission Reduction

1,100,316 tons of CO₂e

Electricity Savings

48,600 MWh

Natural Gas Savings

689.13 million Nm³

NO_x Emission Reduction

1,240 tons

CO Emission Reduction

7,273 tons

Total Sulfur Recovery

5.10 million tons

Green and Smart Factory

Integrating technology with green principles, the Company is building a Green & Smart Factory, deeply merging clean tech R&D with intelligent manufacturing and low-carbon operations for bidirectional low-carbon empowerment.

Ruichang International Smart Factory: An Integrated Industrial Upgrade Embracing Scale, Intelligence, and Sustainability

In August 2025, Ruichang's Luoyang smart factory officially commenced operations, alongside the marketization of its Combustion Test Center. The center continues R&D testing services for Honeywell UOP's Callidus and HTS, while opening third-party testing capabilities compliant with industry standards to China and the Asia-Pacific, addressing needs like burner compatibility testing and energy-saving retrofit validation to help petrochemical firms meet emission reduction and efficiency goals. This marks a new stage in the Company's intelligent upgrade and green development in petrochemical energy-saving and environmental protection equipment.

The new smart factory covers 9,186.75 m², equipped with advanced processing machinery like large gantry CNC fiber laser cutters and precision electronic plate rolling machines. A leading domestic robotic welding workstation for burner enclosures enables full automation of key processes, ensuring product consistency via digital control and significantly boosting core production capacity and efficiency.

Green and low-carbon principles are embedded throughout the factory lifecycle. Optimized layout design enhances natural lighting, reducing mechanical ventilation energy use. A three-stage wastewater treatment system enables industrial water recycling, fully meeting national pollutant discharge standards.



Smart Factory



Welding Robot



High-Efficiency Daylighting and Ventilation

Technology Exchange Conferences

The Company actively participates in industry summits, technical forums, and professional exchanges, focusing on trends, challenges, and practices in energy storage, energy conservation, environmental protection, and new energy utilization, promoting industry dialogue and adoption of clean technologies.

Honeywell UOP - Ruichang International 2025 Combustion Technology Summit: Focusing on "Low-NOx, Low-Carbon"

In August 2025, Ruichang International and Honeywell UOP Callidus jointly held the "Igniting a New Era of Combustion – 2025 Combustion Technology Summit" in the historic city of Luoyang. The event brought together nearly a hundred industry experts and corporate representatives, fostering in-depth exchanges through diverse formats such as keynote speeches, roundtable forums, and site visits. This established an efficient platform for knowledge sharing and collaborative partnerships.

At the summit, technical experts from Callidus and Ruichang International centered on the overarching theme of "low nitrogen, low carbon." Through three technical sessions and roundtable discussions, they systematically outlined pathways for innovative and efficient combustion technologies. The discussions also explored forward-looking strategic opportunities in areas such as low-carbon synergies and intelligent upgrades for combustion technologies.



Roundtable Discussion

Moving forward, Ruichang International and Honeywell UOP will take this summit as a new starting point to deepen end-to-end collaboration in "joint technology development – localized production – scenario validation." Anchored in China's national "Dual-Carbon" strategy, the partnership will leverage combustion technology innovation as a driving force, injecting sustained momentum into the green transformation and high-quality development of the petrochemical industry.

Ruichang International at ADIPEC 2025: Expanding Global Footprint with Technology

In November 2025, the Abu Dhabi International Petroleum Exhibition & Conference (ADIPEC 2025) was held at the Abu Dhabi National Exhibition Centre (ADNEC), gathering energy leaders and technology innovators from around the world. Ruichang International was invited to participate in the event.

Aligning with the core theme of "AI-Energy Integration and Low-Carbon Technologies", the Company showcased its core capabilities in engineering design, equipment manufacturing, and energy conservation. It engaged with partners from the Middle East and globally to explore innovative paths for energy saving, emission reduction, and industrial operational efficiency.



At the Exhibition

Climate Change Adaptation

Ruichang International recognizes that addressing climate challenges requires broad societal participation and collective action. The Company integrates climate change into its strategic considerations, identifies potential climate-related risks, and establishes effective internal controls to minimize negative impacts while exploring new opportunities.

Governance

To advance its sustainability vision, the Company has established ESG governance structure, including the Board of Directors, Audit Committee, ESG Executive Committee, and ESG Working Group, ensuring appropriate and agile decision-making and action on climate change.

Board of Directors	<ul style="list-style-type: none"> Oversee and approve climate change strategy and targets, and regularly review climate-related work performance.
Audit Committee	<ul style="list-style-type: none"> Supervise climate change management under Board authorization, ensuring compliance with regulations and best practices; Review climate-related work progress.
ESG Executive Committee	<ul style="list-style-type: none"> Coordinate implementation of climate strategy; Review climate-related risks/opportunities, formulate response measures, set emission reduction targets, and report progress to the Board of Directors and Audit Committee.
ESG Working Group	<ul style="list-style-type: none"> Responsible for the daily implementation and execution of carbon emission management as well as energy-saving and carbon reduction measures, including the collection and analysis of climate-related data.

Climate Strategy

The Company deeply integrates its climate strategy into its overall development, taking systematic actions to address risks and seize green opportunities, promoting its own low-carbon transition while collaborating with stakeholders to build resilience and a low-carbon future.



Climate-Related Risks and Opportunities

Ruichang International comprehensively assesses climate-related risks and opportunities, analyzing their potential impact on operations, investments, and development, laying the foundation for low-carbon transition and sustainable development.

Risk/Opportunity	Potential Impact	Timeframe	Value Chain Impact	Financial Impact	Mitigation Measures
Physical Risk	Acute	Main production bases in Henan prone to extreme weather (heavy rain, fog), potentially causing economic loss and personnel injury.	Operations, Logistics	Increased operational costs; Asset loss; Revenue reduction.	<ul style="list-style-type: none"> Develop contingency plans for extreme weather events and maintain real-time monitoring of meteorological information to ensure timely response to warnings. Maintain sufficient emergency supplies, adjust production schedules in advance, and implement personnel evacuation procedures as needed.
	Chronic	Persistent high temperatures due to climate change may affect operational stability and supply/production/sales of some products.	Operations, Logistics, Sales	Increased operational costs; Revenue reduction.	<ul style="list-style-type: none"> Implement safety and health protection measures for high-temperature operations to prevent personnel from being harmed.
Transition Risk	Policy & Legal	As China's "Dual Carbon" goals advance, the Company, as an equipment manufacturer, may face higher carbon emission costs, stricter limits, and pressure to adjust/upgrade processes. During heavy pollution alerts, required production restrictions directly impact output, revenue, and costs, potentially causing delivery defaults and customer loss.	Operations	Increased operational costs; Revenue reduction.	<ul style="list-style-type: none"> Reduce carbon emissions in the manufacturing process through technological upgrades, energy-saving retrofits, and green power substitution, thereby enhancing product competitiveness. Concurrently, improve the carbon accounting and disclosure system to meet regulatory requirements. Develop emergency response plans for heavily polluted weather conditions and maintain continuous monitoring of meteorological information to ensure timely responses to warnings.
	Market	Growing global demands for carbon reduction and environmental protection require continuous R&D to strengthen green product attributes, maintaining innovation and competitiveness to prevent market share loss.	Operations, Sales	Increased operational costs; Increased R&D investment.	<ul style="list-style-type: none"> Proactively engage with customers to understand their expectations regarding key sustainability areas, such as climate change. Continuously enhance the green attributes of products.
	Reputational	Growing global concern over climate change presents a potential reputational risk. Responsible companies must lead in supporting the low-carbon transition and avoid environmentally damaging actions.	Operations	Increased operational costs.	<ul style="list-style-type: none"> Integrate climate action into the core strategy, ensure transparent disclosure of climate-related information, proactively communicate progress with stakeholders, and use substantive actions as a foundation for reputation endorsement.
Opportunity	Market Value	Growing global demand for industrial decarbonization and energy efficiency offers substantial market space for core businesses (waste heat recovery, sulfur recovery, low-NOx burners), supporting business scale and revenue growth.	Sales	Increased revenue.	<ul style="list-style-type: none"> Continuously increase R&D investment, focusing on breakthroughs in core technologies such as high-efficiency waste heat recovery and ultra-low nitrogen combustion, securing new patents, and advancing the industrialization of cutting-edge technologies to strengthen low-carbon technology barriers.
	Product Premium & Customer Loyalty	Low-carbon technology products with technical barriers (e.g., low NOx burners) can command premium pricing. Providing full lifecycle energy-saving and carbon-reduction services enhances customer loyalty.	Sales	Increased revenue.	<ul style="list-style-type: none"> Stay abreast of domestic and international low-carbon policies, strive for green financing and policy subsidies, deepen collaborations with leading enterprises, and capture opportunities in the high-end industrial decarbonization market.

Climate Targets and Actions

Acknowledging the global consensus on climate action, the Company has set short-, medium-, and long-term climate targets, transitioning towards a low-carbon, more sustainable business model through carbon inventory, energy-saving and carbon reduction management, and renewable energy utilization.

Ruichang International Climate Goals

2025-2027	<p>Short-term Goals</p> <hr/> <p>Focus on establishing an operational carbon management system, conducting regular carbon accounting to understand emissions, identifying key reduction areas, and promoting low-carbon production to continuously reduce carbon intensity.</p>
	<p>Medium-term Goals</p> <hr/> <p>Deepen the carbon management system, integrate green manufacturing into full-process operations, promote low-carbon supply chain development, and strengthen green leadership within the supply chain.</p>
	<p>Long-term Goals</p> <hr/> <p>Continue deepening the low-carbon transition strategy, gradually improve carbon neutrality strategic planning, and continuously optimize implementation plans.</p>

Three Key Levers

01. Carbon Inventory

1. Systematically identify GHG emission sources, measure and disclose data using scientific standards (e.g., GHG Protocol) to guide emission reduction efforts.

02. Energy-Saving and Carbon Reduction Management

Continuously improve energy efficiency and reduce emissions, ensuring effective implementation of management measures to drive green transformation across operations.

03. Renewable Energy Utilization

3. Actively explore and expand the use of renewable energy to replace traditional energy consumption and reduce GHG emissions.

Carbon Inventory

Based on the *Greenhouse Gas Protocol*, Ruichang systematically inventoried operational (Scope 1 and 2) carbon emissions for the past two years. In 2025, the Company reduced its operational carbon emissions by 20.79% compared to the base year of 2024.

Ruichang International Carbon Emissions (2024-2025)

	2024		2025	
	Emissions (tonne CO ₂ e)	Intensity (tonne CO ₂ e / 10,000 yuan revenue)	Emissions (tonne CO ₂ e)	Intensity (tonne CO ₂ e / 10,000 yuan revenue)
Scope 1	599.44	0.0135	406.40	0.0081
Scope 2	1,505.95	0.0339	1,261.37	0.0251
Total	2,105.39	0.0474	1,667.77	0.0330

In the future, the Company will further improve the carbon emission data collection mechanism, regularly compile data, expand inventory to include Scope 3, monitor progress against reduction targets, and further implement energy-saving measures.

Energy-Saving and Carbon Reduction Management

The Company actively promotes energy saving and emission reduction across all operations.

Low-Carbon Awareness

Conduct training and awareness campaigns on energy conservation, encouraging efficient use of computers, air conditioners, lighting, and printers, and fostering good habits like turning off lights and equipment.

Paperless Office

Expand paperless workflows and online approvals to reduce paper usage and resource consumption.

High Light-Transmittance Factory Design

The new Luoyang factory uses high light-transmittance design for ample natural daylight, reducing the need for artificial lighting during daytime operations.

Employee Low-Carbon Commuting

Encourage green commuting (walking, cycling, electric vehicles/buses, metro).

Other Initiatives

Details please see Section Resource Management.


Renewable Energy Utilization

The Company actively explores renewable energy applications, promoting projects like photovoltaic (PV) power generation. A rooftop PV project at the Luoyang facility was commissioned in January 2025, operating under a "self-consumption with grid feed-in" model. In 2025, the total self-generated photovoltaic electricity was 771,890 kWh, of which 607,250 kWh was utilized for internal operations, and 164,640 kWh was supplied to the public grid.



Environmental Management

Ruichang integrates environmental protection as a key component of its development strategy. We are committed to continuously establishing and improving our environmental management system, including the development of the *Environmental Management Manual* and the *Environmental Factor Identification and Assessment Procedure*, to strengthen effective control over environmental risks and ensure the comprehensive advancement of environmental management initiatives.



环境管理体系认证证书
洛阳瑞昌环境工程有限公司
环境管理体系符合GB/T 24001-2016/ISO 14001:2015标准

No material non-conformities identified during certification audit

100%
rectification rate for minor non-conformities

Ruichang International ISO 14001 Environmental Management System Certification

The Company has established an environmental management organizational system with the General Manager as the core and primary responsible person. A dedicated HSE (Health, Safety & Environment) department serves as the core functional body, comprehensively planning, promoting, supervising, and guiding the implementation of all environmental protection management tasks, ensuring effective execution of related regulations.

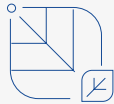
Environmental Compliance Management

The HSE department leads the systematic identification and scientific evaluation of environmental aspects across the product lifecycle (design, operation, service) that the Company can control or influence. Significant environmental aspects are determined, and a dynamic management register is maintained. The identification and evaluation results form the basis for setting environmental objectives, targets, and implementing specific management programs.

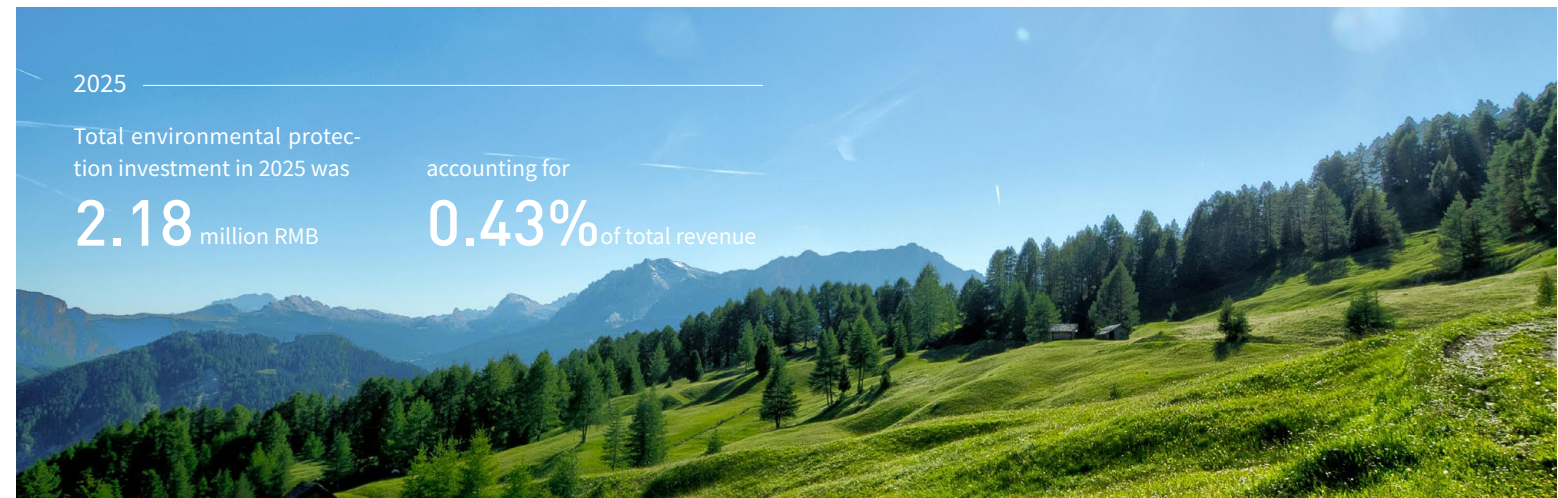
The Company organizes regular internal and external environmental inspections. Dedicated environmental personnel are responsible for daily patrols and on-site control, focusing on key production areas to verify compliance with pollutant discharge standards, proper waste disposal, and resource conservation. Identified issues are promptly reported, rectified within deadlines, and followed up to ensure closure, forming a "patrol - identify - rectify - verify" closed-loop mechanism for normalized and standardized environmental management.

The Company has set clear overall environmental compliance objectives and corresponding specific environmental management targets and control indicators. These requirements are decomposed and integrated into detailed operational procedures and standards. Comprehensive implementation plans are developed for each target/risk, specifying measures, timelines, responsible departments/personnel, budget, and steps. Performance against these requirements is incorporated into the Company's regular performance assessment system.

Environmental Objectives



- Zero environmental pollution complaints
- Zero hazardous chemical leakage incidents





Emergency Management

Regarding heavy pollution weather response, the Company attaches great importance to regional air pollution prevention and control, establishing a sound heavy pollution weather emergency response mechanism with a "one factory, one policy" implementation plan. During alerts, the Company immediately activates the corresponding response level, strictly follows government-mandated emission reduction measures, scientifically adjusts production plans, implements targeted production restrictions, and controls emission intensity to minimize impact.

Environmental Communication

The Company has established a standardized, multi-dimensional system for internal and external environmental information communication to enhance environmental awareness and ensure effective implementation of management requirements.

Internal Communication

Communicate environmental policy, objectives, programs, audit results, emergency plans, and performance via documents, notice boards, meetings, and management reviews to ensure awareness and efficient information flow.

External Communication

Manage external contractors and visitors through established management systems. Environmental precautions for site entry and visits are clearly communicated and acknowledged via signed confirmation.

Biodiversity

Biodiversity protection is an integral part of the Company's environmental governance. During project site selection and layout planning, ecological protection is a key consideration. The Company prioritizes already developed land, actively avoids basic farmland, high flood-risk areas, and endangered species habitats to minimize disturbance to natural ecosystems and wildlife, fulfilling its biodiversity responsibility through prudent and compliant site

Indicator	2024	2025
Number of Material Environmental Incidents	0	0
Number of Community Complaints Related to Environmental Compliance	0	0
Number of Administrative Penalties/Criminal Liabilities Related to Environmental Compliance	0	0

Emission Management

Ruichang strictly complies with national environmental laws and regulations (*Environmental Impact Assessment Law, Water Pollution Prevention and Control Law, Air Pollution Prevention and Control Law, Solid Waste Pollution Prevention and Control Law, etc.*) to ensure all emissions meet standards. As a manufacturer of special environmental protection equipment, its production processes primarily involve waste gas, wastewater, and waste generation. The Company has obtained the necessary pollutant discharge permits in accordance with regulations.

Air emission

The Company has established a comprehensive air emission control system, implementing compliant emission requirements from source control, process treatment, to end-point monitoring, continuously enhancing air pollution prevention capabilities.

Waste Gas Treatment

- Production waste gas mainly includes welding/cutting fumes, sandblasting dust, adhesive fumes, and painting fumes.
- **Welding/Cutting Fumes:** Centrally collected, treated via cartridge dust collectors, and discharged via stack in compliance with standards.
- **Sandblasting Dust:** Enclosed collection, treated via cyclone + cartridge dust collectors, discharged via stack in compliance with standards.
- **Adhesive Fumes:** Enclosed collection, treated via photo-oxidation catalysis + activated carbon adsorption, discharged via stack in compliance with standards.
- **Painting Fumes:** Enclosed collection, treated via dry filtration + adsorption-desorption + catalytic combustion system, discharged via stack in compliance with standards.

Operation & Maintenance

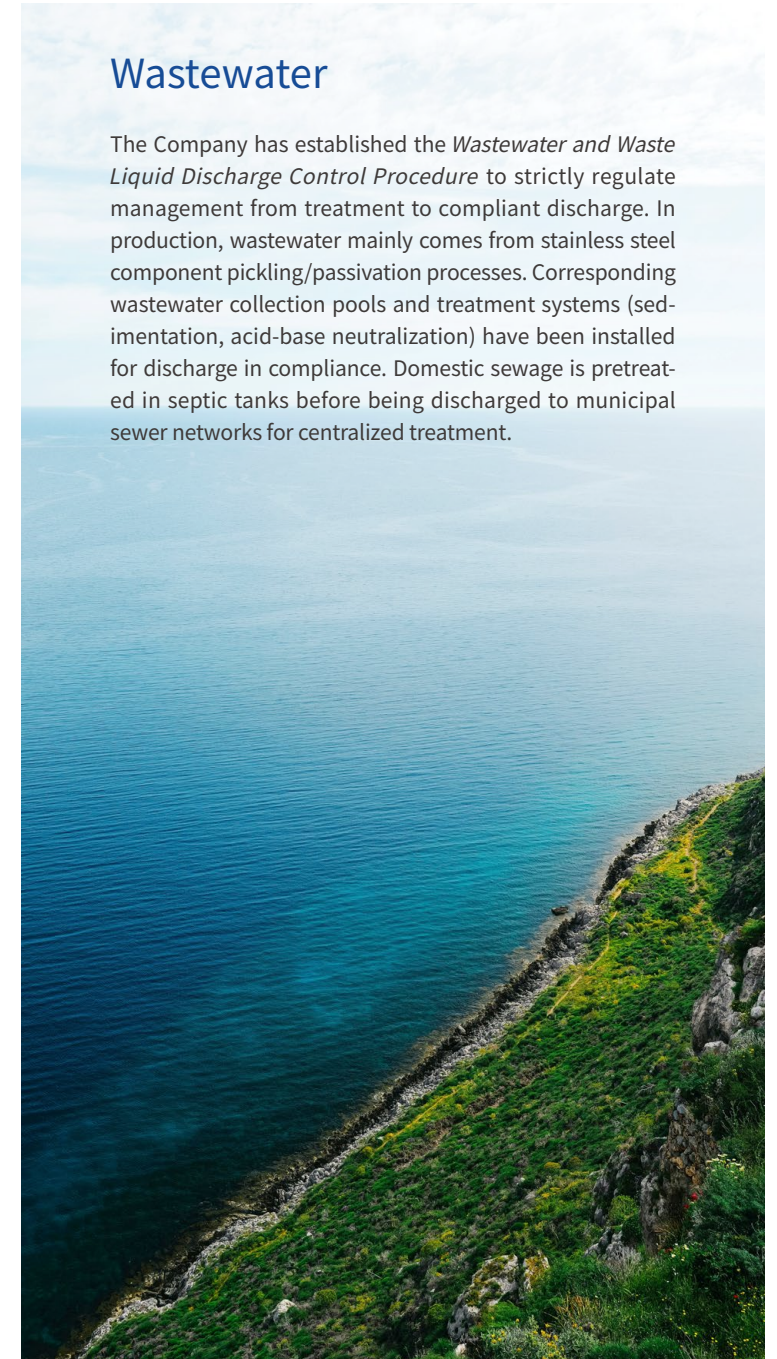
- Maintain equipment operation and maintenance records; regularly clean dust removal equipment and inspect/replace consumables.
- Third-party service providers maintain online monitoring systems to ensure proper operation and data accuracy.

Emission Monitoring

- Painting operations are equipped with online monitoring systems, primarily for non-methane total hydrocarbons.
- Accredited third-party testing agencies conduct regular testing of emission outlets.

Wastewater

The Company has established the *Wastewater and Waste Liquid Discharge Control Procedure* to strictly regulate management from treatment to compliant discharge. In production, wastewater mainly comes from stainless steel component pickling/passivation processes. Corresponding wastewater collection pools and treatment systems (sedimentation, acid-base neutralization) have been installed for discharge in compliance. Domestic sewage is pretreated in septic tanks before being discharged to municipal sewer networks for centralized treatment.



Waste

The Company has established the *Waste Management Procedure* to strictly regulate the collection, storage, and disposal process, implementing categorized management aimed at achieving "compliance, harmlessness, and reduction."

Waste Management Objectives

Compliance

All aspects (classification, storage, transportation, disposal) comply with national and local regulations.

Harmlessness

Avoid pollution of soil, water, air, and negative impacts on ecosystems.

Reduction

Encourage waste resource utilization and reduction at source to minimize generation and resource consumption.

Hazardous Waste	<ul style="list-style-type: none"> Mainly include waste acid, waste oil, spent activated carbon, etc. Collected and temporarily stored in a designated hazardous waste storage facility. Licensed contractors handle regular transportation and disposal. The Company tracks the entire process to ensure compliant disposal.
General Industrial Waste	<ul style="list-style-type: none"> Mainly include scrap steel. Waste that cannot be reused internally is collected and periodically sold for comprehensive recycling.
Domestic Waste	<ul style="list-style-type: none"> Handled by the Administration Department which arranges periodic transportation by municipal sanitation services to designated collection points for centralized treatment.

	Indicator	2024	2025	Unit
Air Emission	VOCs	188	691.7	kilogram
	SO ₂	/	46.4	kilogram
	NOx	/	884	kilogram
	Particulate	310	2,910.7	kilogram
Wastewater	Total Wastewater	20,755.8	37,538.8	tons
	Industrial Wastewater	565	639.1	tons
	Domestic Wastewater	20,190.8	36,899.7	tons
Waste	Total Waste Generated	43.813	386.215	tons
	Total Non-Hazardous Waste	42	385.13	tons
	Non-Hazardous Waste Intensity	0.00095	0.00767	tons/10,000 yuan revenue
	Total Hazardous Waste	1.813	1.085	tons
	Hazardous Waste Intensity	0.00004	0.00002	tons/10,000 yuan revenue

In 2025, air emission, wastewater, and waste management complied with regulatory standards, with no environmental compliance incidents recorded.

Resource Management

Ruichang actively practices green operations, implementing the *Energy and Materials Management Control Procedure* to establish systematic and standardized energy, water, and materials management systems, continuously improving refined management capabilities to maximize resource efficiency across operations.

Energy Management

The Company carries out energy-saving work at all operational sites to reduce carbon emissions.

New Energy Vehicles

All operational vehicles within the plant are new energy vehicles.

Energy-Saving Equipment

Office and plant lighting are gradually being replaced with LED energy-saving lights. Security patrols check office areas for lights left on, encouraging employees to turn them off.

Lighting Design

Office buildings utilize natural lighting design with large skylights and side windows to maximize daylight, reducing reliance on artificial lighting.

Green Office Practices

Rational scheduling of electrical equipment operation times; setting standardized office air conditioning temperatures (e.g., not exceeding 26° C in winter).

Water Resource Use

The Company emphasizes water conservation, integrating it into daily operations and employee conduct. Initiatives include:

Awareness Campaigns: Conducting regular water-saving awareness activities to foster a conservation mindset and encourage action, especially in high-use areas like restrooms and cafeterias.

Infrastructure Management: Prioritizing procurement of water-saving fixtures; periodically inspecting water-using equipment and pipelines to promptly identify and fix leaks, preventing waste and improving water use efficiency.



Materials and Packaging Management

Ruichang focuses on efficient use of materials and packaging to maximize resource value and minimize waste generation.

Precision Raw Material Procurement

Procuring steel materials in dimensions and shapes precisely matching production needs to reduce scrap generation at source and improve overall steel utilization.

Optimized Steel Processing

Introducing intelligent nesting software for laser cutting, enabling centralized nesting based on order demands to optimize cutting paths and layout, improving material utilization and reducing scrap. In 2025, steel utilization rate increased by nearly 12% compared to 2024.

Solid Waste Resource Recovery

Production steel scrap is uniformly handled by professional recycling vendors for reuse, reducing waste generation and resource loss.

Production Auxiliary Material Reuse

Establishing standardized maintenance, upkeep, and reuse mechanisms for molds, fittings, and other production auxiliary materials closely related to product processes, extending their lifecycle through professional care to reduce procurement and consumption costs.

Optimized Export Product Packaging

Communicating export packaging standards to suppliers in advance, enabling them to complete packaging production directly according to specifications, avoiding secondary packaging at the Company and reducing material and process waste.

Upstream-Downstream Col- laborative Waste Reduction

Actively promoting green packaging concepts to customers, encouraging reduction of unnecessary packaging, and collaborating with supply chain partners to practice low-carbon resource use.

Ruichang International Resource Use in 2025

Indicator	2024	2025
Direct Energy		
Natural Gas Consumption (m ³)	224,346.34	176,374.30
Natural Gas Intensity (m ³ /10,000 yuan revenue)	5.05071	3.51372
Gasoline Consumption (liters)	11,012.89	5,365.43
Gasoline Intensity (liters/10,000 yuan revenue)	0.24793	0.10689
Indirect Energy		
Purchased Electricity (kWh)	2,490,456.77	2,183,439.70
Purchased Electricity Intensity (kWh/10,000 yuan revenue)	56.06763	43.49837
Water		
Total Water Consumption (tons)	23,062.00	41,710
Water Intensity (tons/10,000 yuan revenue)	0.51919	0.83094

Ingenuity Empowerment, Shared Responsibility

Building upon industrial foundations, uniting diverse forces, and fulfilling social responsibilities – we recognize that the true value of development lies in giving back to society. Guided by the principle of "Co-existence and Co-prosperity," we collaborate with employees, partners, communities, and the industrial value chain. We leverage technology to enhance livelihoods and take concrete actions to support societal progress, building a warm and solid foundation for people's well-being through incremental practices.

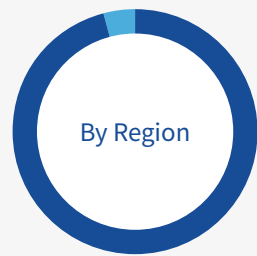


Employee Care

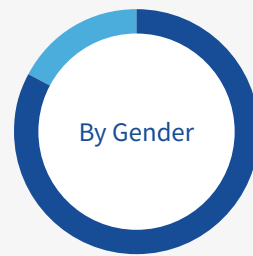
The Company strictly complies with relevant laws and regulations to safeguard employees' legitimate rights and interests, providing a diverse, fair, and equitable working environment. The *Employee Handbook* explicitly prohibits any discriminatory behavior based on ethnicity, religion, gender, age, nationality, etc., in recruitment, promotion, compensation, and the work environment, as well as any form of harassment.

In 2025, Ruichang International recorded zero incidents of human rights violations such as hiring discrimination, forced labor, or child labor, and no employee grievances were filed.

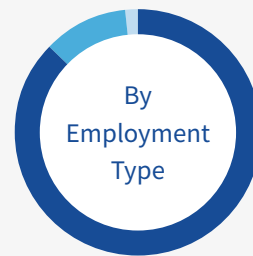
As of December 31, 2025, the total number of employees was 476.



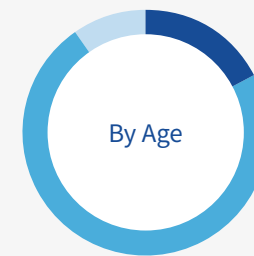
Mainland and China	474
Overseas	2



Male	395
Female	81



Permanent Employees	416
Probationary Employees	53
Internship Employees	0
Outsourced Labor Employees	0
Other Types	7



Under 30 Years Old	83
Over 50 Years Old	46
30 to 50 Years Old	347



Senior Management	12
Middle Management	27
Junior Staff	437

The Company employed **3** people with disabilities providing them with suitable positions

2025 Employee Turnover Rate **14.92%**

Employee Turnover

By Region	Mainland China	14.98%
	Overseas	0%
By Gender	Male	14.18%
	Female	18.52%
By Age	Under 30	21.69%
	30 to 50	13.26%
	Over 50	15.22%

Fostering a Fulfilling Workplace

Ruichang International cares for every employee, ensuring work-life balance through diverse benefits and genuine humanistic care to enhance job satisfaction and a sense of belonging. The Company has established a *Compensation Management System* that clearly defines salary structures and disbursement procedures, aiming to provide a competitive compensation package. The *Employee Handbook* guarantees basic benefits such as social insurance, along with birthday benefits, probationary completion gifts, holiday benefits, wedding gifts, and high-temperature subsidies. Additionally, the Company continually improves its welfare system, offering supplementary commercial insurance (e.g., supplementary medical insurance, accident insurance) and providing educational support for employees' children.

Ruichang International Honors Children of Employees for Academic Excellence

In August 2025, Ruichang International held the 2025 Academic Awards Ceremony to recognize and encourage the "Ruichang Second Generation" who achieved outstanding academic results in 2025, strongly supporting employees' children in their pursuit of academic excellence and outstanding achievement.



Award Ceremony

Employee Communication & Engagement

The Company actively builds open, transparent, and democratic communication mechanisms, deploying two-way interactive channels between employees and management, including employee forums, satisfaction surveys, the corporate WeChat platform, and the EHR system.

➔ Employee Forums

The Company organizes annual management trainee forums. Employee representatives openly discuss work environment, benefits, supervisor-subordinate relationships, and career development, allowing the Company to promptly understand and address employee needs, enhancing their sense of belonging.

➔ Employee Satisfaction Surveys

Conducted annually, these surveys cover multiple dimensions such as basic job security, career development, team belonging, and collaboration to understand employee sentiments, gather suggestions, and further improve satisfaction, loyalty, work efficiency, and quality.

➔ Corporate WeChat and EHR Platform

All internal employees can provide feedback and communicate with their supervisors, department heads, senior leaders, or the HR center via these platforms.



Employee Recreational Activities

Ruichang International organizes diverse themed activities to cultivate a vibrant corporate cultural life. Regularly planned recreational events allow employees to experience corporate warmth in a relaxed and enjoyable atmosphere, strengthening team cohesion.

Spring Festival Lantern Festival

In February 2025, the Company held a "Lantern Riddle Guessing" event with small games like ring toss for prizes, offering employees a unique Lantern Festival experience.



Lantern Festival Riddle-Guessing Activity

Dragon Boat Festival Celebration

In May 2025, the Company organized a "Handmade Zongzi & Sachet Making" activity, allowing participants to experience the cultural heritage and warm atmosphere of the traditional festival.



Zongzi-Making Activity

Autumn Harvest & Family Outing – Peach Picking

In October 2025, over a hundred employees and their families gathered for a peach-picking outing. This activity provided a break from busy work, relaxation in nature, and enhanced emotional bonds among employees through family-friendly interaction, fostering a friendly, harmonious, and united corporate culture.



Peach Picking Activity

Caring for Female Employees

Ruichang International effectively safeguards the legal rights and interests of female employees, creating a comprehensive care system that includes maternity leave, International Women's Day celebrations, and paid leave. The Company also launched a female manager development program and established a dedicated WeChat group for female employees to share insights and discuss topics, serving as an exclusive channel for daily communication and care.

Creative Flower Arrangement, Celebrating Women with Color, Showcasing Female Grace

On March 7, 2025, the Company held a DIY flower arrangement & sachet making event for Women's Day, which also included a personal finance lecture. The event balanced fun experience with practical value, allowing female employees to enjoy the festive occasion in a warm atmosphere, demonstrating the Company's caring support for its female workforce.



DIY Flower Arranging Event

Human Resource Development

Employee growth is the cornerstone of corporate development. Ruichang International is dedicated to building a comprehensive talent development ecosystem, helping every employee overcome career bottlenecks and achieve win-win personal and corporate growth through systematic career planning and learning & development programs.

Performance Evaluation

The Company regulates talent assessment and qualification certification standards and processes through the *Talent Review and Qualification Certification Management System*, clarifying career paths. Additionally, the *Target Performance Management System* enables full-cycle performance management.

Diverse Evaluation Methods

- Self-assessment
- Supervisor assessment
- Skip-level review
- Performance review meetings

Full-Cycle Management Mechanism

- Goal setting
- Progress tracking
- Communication and adjustment
- Comprehensive evaluation
- Result feedback

The Company has established an employee performance grievance mechanism to protect employees' legal rights and voice in performance management, also promoting continuous optimization of the performance evaluation system and fostering a fair workplace atmosphere.

Improvement plans are developed based on evaluation results, matching targeted training resources to provide necessary growth support.



Performance Incentives

The Company has established various incentive systems, recognizing and rewarding high-performing employees through commendations, bonuses, or equity incentives, stimulating potential through diversified reward schemes.

Equity Incentives

Number of employees holding shares

accounting for **6.09%** of total employees

29



2025 Passing the Torch, Glorious Start – "Corporate Treasure Hunt Veteran Award" and "Quarterly Cultural Torchbearer Award" Ceremony

The "Corporate Treasure Hunt Veteran Award" pays tribute to the past, while the "Quarterly Cultural Torchbearer Award" looks to the future. These awards recognize outstanding Ruichang individuals who demonstrate focus and dedication and convey corporate values.



"Corporate Treasure Hunt Veteran Award" Ceremony



"Quarterly Cultural Torchbearer Award" Ceremony

Annual Outstanding Employee Recognition

The Company recognized individuals who made significant contributions in performance, management improvement, and professional empowerment. Awards were given to 27 "Gold Star Employees", 21 "Most Promising Newcomers", 5 "Outstanding Mentors", 7 "Partners in Building Dreams Award" recipients, and 1 "General Manager's Special Award".

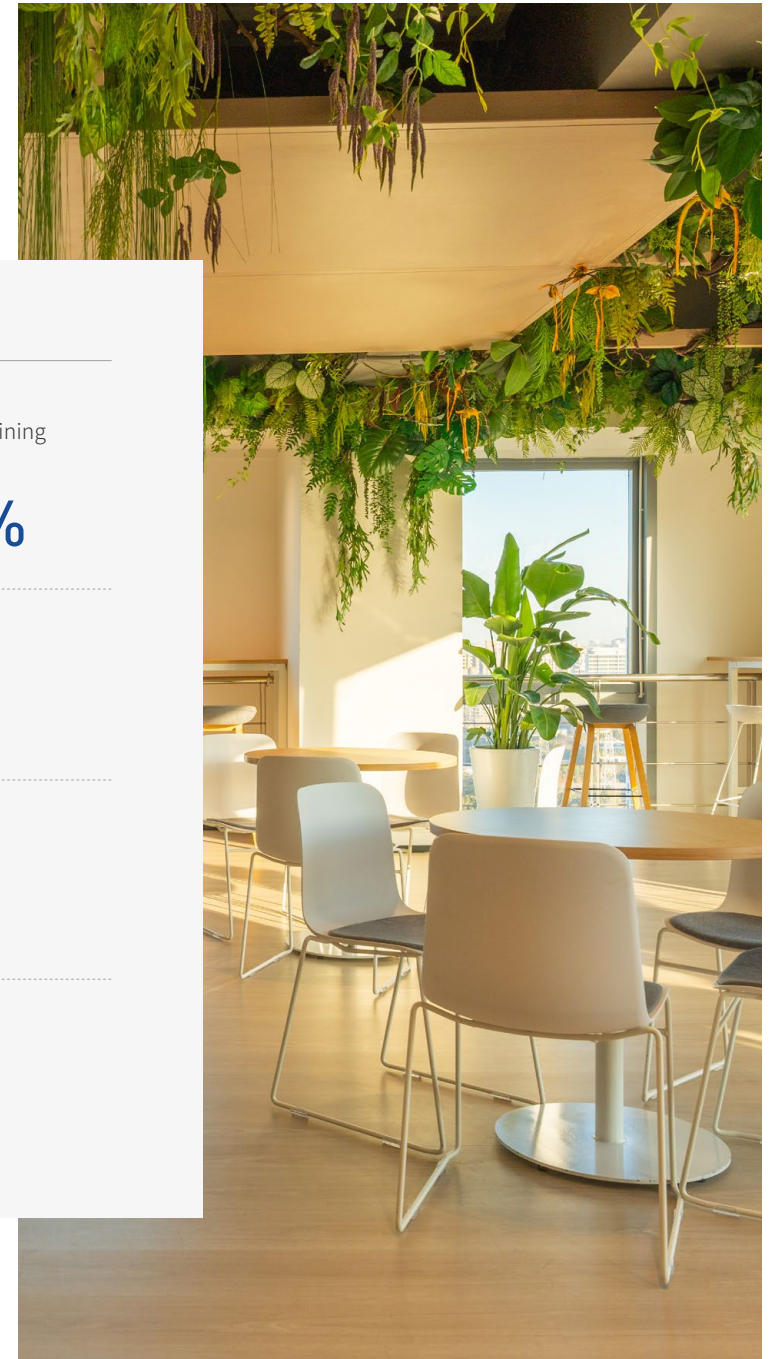


Recognition Ceremony



Employee Empowerment

The Company continuously empowers employees through diversified learning methods such as "on-site coaching + online courses," comprehensively enhancing professional competence and comprehensive skills. The launch of the HER system's E-learning platform provides continuously updated course resources to meet fragmented mobile learning needs for all employees, consistently empowering their long-term development.



2025 Employee Training Performance

Total training sessions	covering	Total training hours	Average training hours per employee	Employee training coverage
154	5,682 person-times	12,581	26.43	100%
Senior Management: Coverage	average hours	Middle Management: Coverage	average hours	
100%	18.83	100%	37.35	
Non-Managerial Staff: Coverage	average hours	Male Employees: Coverage	average hours	
100%	25.96	100%	27.49	
Female Employees: Coverage	average hours			
100%	21.25			

The Company conducts talent reviews based on performance and development potential, forming a talent matrix (nine-box grid). Based on the results, a tiered talent pool is established with differentiated development plans and management strategies, complemented by targeted enhancement course systems and specialized training to rapidly enhance corresponding capabilities. Special honors like "Knowledge Expert", "Alchemy Award", and "Talent Pool Hall of Fame" have been established to systematically and multi-dimensionally motivate outstanding talent and strengthen a culture of knowledge sharing and innovation.

Management Trainee Training

In July 2025, Ruichang International officially launched the 2025 Management Trainee Development Program, welcoming 15 outstanding graduates from renowned universities across the country. On July 1st, all new members successfully completed their onboarding and were formally integrated into the Company's talent development system.

To systematically enhance the comprehensive capabilities of the new employees and accelerate their role transition, the Company organized a three-day centralized induction and empowerment training starting from July 2nd:

Day 1 Deepening Mission Understanding and Planning for the Future

The training focused on introducing the Company's development journey, core values, and sustainability philosophy, helping the management trainees gain a profound understanding of the corporate mission and cultural foundation. Additionally, sessions on Company policies, regulations, and compliance requirements were conducted to establish a strong foundation for professional ethics. The dual-track career development system for employees was comprehensively explained, providing a clear framework for personal growth.

Days 2-3 Gaining Business Insights and Building a Solid Foundation

Systematic instruction was provided on the Company's core product lines, business layout, and market strategies, enabling the trainees to appreciate Ruichang International's innovative capabilities and leading position in the field of green energy equipment.



Management Trainee Training Session

Ruichang International actively encourages employees to engage in enthusiastic learning, boldly participate in various national professional skill competitions, actively take part in selections organized by professional institutions, and continuously enhance their professional service skills.

Embracing Competition, Honing Skills | Ruichang International Makes a Remarkable Debut in the Specialized Equipment Arena

In December 2025, the Third Henan Provincial Special Equipment Vocational Skills Competition concluded in Zhengzhou. Focused on advancing the high-quality development and ensuring the high-level safety of special equipment across the province, the competition centered on critical safety-related operational roles, featuring three hands-on events: Non-Destructive Testing Technician, Welder, and Elevator Installation and Maintenance Technician. With solid expertise and consistent performance, Ruichang International's technical backbone stood out among 136 participants from the province, securing a top-ten finish and winning the Excellence Award in the Welder category. This achievement vividly demonstrates the craftsmanship spirit embodied by Ruichang's professionals.



Employee Health & Safety

Ruichang International has established a comprehensive occupational health and safety (OHS) management system and is certified to the ISO 45001 Occupational Health and Safety Management System standard. The Company implements multiple measures to provide health and safety protection, including health check-ups, training, and occupational disease prevention.

The Company has built a comprehensive safety production responsibility system covering all levels and positions. Supported by the *Safety Performance Evaluation Management System*, a standardized assessment plan is developed. At the beginning of each year, *Work Safety Objective Management Responsibility Statements* are signed across the board, decomposing responsibilities layer by layer for full implementation. In late December each year, the Company comprehensively monitors and evaluates the implementation progress and actual results of safety targets. Assessment results are directly linked to department and management compensation, using an assessment mechanism to ensure effective implementation of safety responsibilities at all levels.

In 2025, the signing rate for the *2025 Work Safety Objective Management Responsibility Statement* reached 100%. The following key OHS performance indicators for the year were successfully achieved.



Ruichang International ISO 45001 Occupational Health and Safety Management System Certification

2025 Work Safety Objectives

Number of employees diagnosed with occupational disease

0

Allocation rate of Personal Protective Equipment (PPE)

100%

Rate of employment with certificates for special post

100%

Accident hazard rectification rate

100%

Employee OHS training completion rate

100%

2025 Work Safety Performance

Work-related injury incidents

6

Injury rate

0.84%

Days lost per million RMB revenue

0.68 days

Major incidents

1

Lost Time Injury Frequency Rate (LTIFR)

4.21

Number of individuals injured

4

Total days lost due to work injury

340 days

Work-Related Fatalities (Past 3 Years)

2023 0

2024 1

2025 0

Fatality rate

2023 0%

2024 0.22%

2025 0%

Occupational Health and Safety Risk Management

Ruichang International actively promotes a dual prevention mechanism for OHS risk control and hazard investigation/rectification. It effectively manages OHS risks at operational sites through risk identification/assessment, control/investigation, and improvements in organizational structure, systems, processes, and auditing.

OHS Hazard Inspection

The Company has established OHS hazard reporting mechanisms and regularly organizes internal and external OHS inspections/audits. Internal inspections led by the HSE department comprehensively check production sites, equipment, and the work environment to eliminate hazards and ensure strict adherence to all safety standards.

OHS risk identification and hazard inspections in 2025

119 times

Identified OHS-related risks and hazards

2,330

Completion rate for rectifying identified OHS risks and hazards

100%

Safety Warning Signs Installed in Workshops

Prohibitory, warning, mandatory, and informational signs compliant with national standards are prominently posted at key locations based on operational risk types. These signs are designed to be eye-catching, clearly legible, firmly affixed, and regularly inspected and maintained.

Risk Notification Cards Displayed in Workshops

Card content is strictly developed according to actual on-site operational risks, explicitly noting precautions, potential hazards, risk levels, safety prevention measures, emergency response methods, and on-site emergency contact information, accompanied by clear warning icons.

On-site Facility Alarm Systems Installed

The Company has standardized the installation of on-site facility alarm systems in critical operational areas and around hazardous facilities within workshops. These systems enable real-time hazard warnings and rapid response, minimizing the probability and severity of incidents, thereby ensuring the safety of workshop operations and personnel.

OHS Culture Building

Ruichang International continuously enhances employees' safety awareness and protective skills by strengthening OHS culture. The Company regularly organizes diversified OHS training and drills covering key areas such as general safety, confined space entry, mechanical injury, electric shock, crane operation safety, welding safety, gas safety, and fire fighting, effectively controlling major hazards and ensuring employee safety.

2025

Total safety training sessions in 2025 including **61** including **30** emergency drills

Total safety training hours **4,395** Total safety training person-times **2,234**

Average safety training hours per person **9.23**



Welding Operation Safety Training

In May 2025, the Company organized phased welding operation safety training sessions, focusing on practical standards for on-site welding operations and key risk prevention measures. The training effectively enhanced the standardized operational skills and safety awareness of frontline welding personnel, while simultaneously strengthening the on-site supervision capabilities and professional management proficiency of safety management staff regarding welding activities.



Welding Operation Safety Training

Fire Drill

In June 2025, the Company organized fire drills in both office areas and operational sites. The drills focused on practical skills such as the proper operation of fire extinguishing equipment and evacuation procedures during fires, ensuring that every employee acquires essential knowledge for self-rescue and mutual aid in fire emergencies. This initiative continuously strengthens employees' fire prevention awareness and emergency response capabilities.



Fire Drill

Mechanical Injury Emergency Drill

In June 2025, the Company organized a specialized emergency drill for mechanical injuries, simulating real operational scenarios on the production site for hands-on practice. This initiative effectively enhanced the safety awareness of frontline personnel regarding workplace hazards and strengthened their capabilities in emergency response and coordinated action during sudden mechanical injury incidents.



Briefing on Key Considerations for Mechanical Injury Emergency Drills



Mechanical Injury Emergency Drill

Health Management

Ruichang International always prioritizes employee health and well-being, building a multi-dimensional health protection system to provide comprehensive health support and services. PPE is precisely configured based on job risk profiles, with standardized procedures for issuance, use, replacement, and disposal, complemented by training and supervision to ensure proper use.

Health Examinations

The Company provides a range of health check-ups:

➔ General Health Check-ups

Required for all new hires; annual check-ups for incumbent employees.

➔ Occupational Health Examinations

Provided for employees in roles with occupational hazard exposure (pre-placement, periodic, and post-placement). Periodic exams are conducted annually.

In 2025, the Company organized a cumulative total of 26 pre-placement health examinations, 8 post-placement health examinations.

Retinal Health Assessment

On April 25, 2025, guided by the principle of "Caring for Employee Health, Enhancing Team Well-being", the Company organized a professional retinal health assessment for employees. All results were integrated into detailed electronic health reports for easy access and long-term tracking.



Health and Wellness Activities

Ruichang International has established sports areas like basketball and table tennis courts at its Luoyang office, added fitness equipment, and regularly organizes diverse health-themed activities to encourage employees to relax, foster healthy lifestyles, and strengthen team bonds.

"Ruichang Cup" Sports Games

Held from September to December 2025, the games featured badminton, basketball, and other events. Conducted in stages with enthusiastic employee participation, the activities enriched employees' leisure time and enhanced team cohesion.



Sports Games

The Company carries out occupational disease examination

1 time

Number of occupational disease examinations

128 person

(Note: No occupational disease cases occurred during the reporting period)

Coverage

100%

Innovation, Research and Development

The Company regards technological innovation as its core growth driver. It has formulated multiple institutional documents, including the *Research and Development (R&D) Management Regulations*, *Innovation Achievement Reward System*, and *Research Center Project Management Rules*, *Patent Management Measures*, *Trademark Management Rules*, and *Intellectual Property (IP) Reward System*. By strengthening independent R&D, cultivating innovative talent, and deepening industry-academia-research collaboration, the Company continuously promotes product and technology upgrades. It always regards IP protection as a core element of independent innovation, establishing an efficient, systematic, and complete IP management system to sustain industry competitiveness.

In 2025, Ruichang International's "Carbon Intelligence-Controlled Phase Change Energy Storage Technology" was recognized as an Outstanding Achievement in the Energy Saving & Carbon Reduction Innovation Track at the Henan Provincial Industrial Green & Low-Carbon Development Innovation Competition.

2025

R&D Investment in 2025	accounting for
32.32	6.44%
million RMB	of core business revenue

Among companies controlled or partially controlled by Ruichang International

Number certified as High-Tech Enterprises	Number recognized as Provincial-Level SRDI Small and Medium-sized Enterprise (SME)
2	1

Number recognized as National-Level "Little Giant" Specialized, Sophisticated, Distinctive (SRDI), and Innovative Enterprises

1

Cultivating Innovative Talent

Adhering to the principle that talent is the primary resource for innovation, the Company has established a systematic, multi-level mechanism for cultivating and developing innovative talent. Through internal professional training, external technical exchanges, and advanced degree programs, it builds growth pathways for technical talent, focusing on cultivating core talent in R&D, design, and green technologies.

Pursuant to the *Scientific and Technological Innovation Achievement Reward System*, the Company has established award mechanisms such as IP rewards, research project awards, and scientific achievement awards to recognize and reward teams and individuals who make outstanding contributions in R&D, design, and process improvement, stimulating innovation initiative.

During the reporting period, several innovative employees were awarded titles like "Innovation Expert" by government departments and industry associations and were selected for government talent programs, fully demonstrating the Company's strength and influence in talent cultivation, technical breakthroughs, and industry innovation.

Ruichang International Employee Selected for Luoyang's Fourth 'Heluo Youth Talent Support Project'

In 2025, employee Wan Dayang was selected for this project based on the "High-Temperature Molten Sulfur Thermal Storage Technology R&D" project. The Company will provide targeted support per the project plan to cultivate young scientific and technical workers.

This recognition affirms individual innovation capability and highlights the Company's R&D strength and talent cultivation effectiveness in advanced energy storage. The Company will take this opportunity to continuously strengthen its support for research talents and promote the transformation of key technological achievements.



An employee has been awarded the honorary title of "Innovation Champion"

2025

In 2025, the number of employees engaged in innovation and R&D	In 2025, the number of employees who upgraded their vocational skills or academic qualifications
126	15

with the following breakdown

Newly certified Senior Engineers	Newly certified Intermediate Engineers
5	4

EMBA	MBA	On-the-job PhD	Engineering PhD
1	1	3	1

Industry-Academia-Research Collaboration

The Company highly values collaborative innovation, actively partnering with domestic and international research institutions, key universities, and industry leaders. It focuses on green, low-carbon, and technology upgrade areas to deepen collaborative research and achievement transformation of key technologies, achieving integration of innovation, industrial application, and sustainability. In 2024, the Company established cooperation with China Building Materials Academy, Huazhong University of Science and Technology, East China University of Science and Technology, East China Petroleum Design Institute, North China Branch of China Petroleum Engineering Construction Limited, and other units to promote the research and development of core fields such as "new energy phase change energy storage technology", "high-temperature sulfur heat storage and exchange technology" and "molten sulfur energy storage technology", further consolidate the technical foundation and enhance the industry influence. At the same time, the Company worked with Henan University of Science and Technology to establish the Industrial Pollution Prevention and Carbon Reduction Technology Research and Development Center to promote in-depth research and application of industrial pollution control and carbon reduction technology.

Collaboration for "Zero-Waste City" Development

Partnering with Shanghai Jinshan Environmental Regeneration Energy Co., Ltd. and East China University of Science and Technology, the Company addressed municipal solid waste and sludge treatment using entrained-flow gasification technology. It has provided its cooperative partner with a pilot test platform capable of processing 10 tons per day, supporting continuous operation trials of the equipment. This platform is utilized for long-term testing of high-temperature gasification and melting treatment of municipal solid waste and sewage sludge, along with research on the characteristics of resulting ash residues. Through this collaboration, not only has the feasibility and stability of the technology been validated, but it has also contributed to developing new solutions for the harmless and resource-oriented treatment of waste.

Leading Provincial R&D Project for Green Storage Breakthrough

Ruichang International, as the lead organization, has jointly launched the provincial key research and development project "Calcium-Based Thermochemical Energy Storage Integrated Energy-Saving and Low-Carbon Technology Development"—in collaboration with the Henan Provincial Department of Science and Technology. This project addresses the demand for large-scale energy storage solutions that are both highly reliable and cost-effective. By leveraging the principles of calcium-based thermochemical energy storage, it aims to develop high-density energy storage technology to tackle challenges such as renewable energy intermittency and industrial waste heat recovery in long-duration energy storage applications. Ruichang is responsible for the full-chain technological breakthrough, ranging from laboratory research to the construction of megawatt-scale demonstration facilities, driving breakthroughs from R&D to engineering applications. The initiative provides critical support for establishing large-scale energy storage systems, improving energy utilization efficiency, and contributing to the technological advancement of regional and national energy storage industries, as well as to energy-saving and carbon reduction goals.

Ruichang International actively expands research and cooperation channels and deepens industry exchanges. It has officially joined the Luoyang Association for Science and Technology and applied to the Luoyang Municipal Science and Technology Association to establish Luoyang Ruichang Environmental Engineering Co., Ltd. Science and Technology Association. This move further strengthens the Company's academic influence in the field of technological innovation. As a technology-driven enterprise, Ruichang will leverage the high-level academic platform of the Luoyang Municipal Science and Technology Association to closely collaborate with research institutions, universities, and industry experts. The Company will actively participate in discussions on cutting-edge technologies, academic exchanges, research projects, and the promotion of industrialization. Simultaneously, the Luoyang Ruichang Environmental Engineering Co., Ltd. Science and Technology Association, which the Company independently applied to establish, will serve as the core organization for internal technological innovation within the enterprise. It will build a professional technical exchange platform to promote research on frontier technologies, the sharing of research results, and the deepening of innovative collaborative models. During the reporting period, the Company's outstanding performance and technological expertise in its specialized field led to its successful admission into the "SRDI Enterprise Association" and the "China Petroleum and Chemical Survey and Design Association". These milestones have further expanded the Company's platforms for industry collaboration and exchange. Building on its long-term technological accumulation and practical engineering experience in energy conservation and environmental protection, the Company actively participates in the discussion, formulation, and revision of industry standards. Through its professional capabilities, the Company contributes to the development of a scientific, unified, and advanced standardization system.

Ruichang International's Deep Involvement in National and Industry Standard Revision

The petroleum and chemical industry standard "Standard for Burners of Fired Heaters in Refining Units" (SH/T 3602-2025), revised under the guidance of the Ministry of Industry and Information Technology, has been officially released and came into effect in November 2025. This standard represents a comprehensive revision of the SH/T 3602-2009 version, aiming to meet the evolving technological needs of the industry. It further standardizes the design, manufacturing, testing, and operation of burners for fired heaters in refining units, contributing to the industry's pursuit of green, efficient, and safe development.



With deep expertise in the field of industrial thermal energy engineering, Ruichang International has been invited to serve as a leading contributing unit for this standard, leveraging its extensive experience in the design, commissioning, and performance evaluation of fired heater burners. In May 2023, during the review meeting for the draft standard submission, Ruichang International was invited to participate and was actively involved in the discussions, evaluations, and finalization throughout the revision process.



Meeting in Session

With years of dedicated industry expertise, Ruichang International has consistently contributed to standardization efforts. Beyond its participation in drafting SH/T 3602-2025, the Company has also been involved in the formulation of multiple national and industry standards, including SH/T 3602-2009 "Technical Specifications for Burner Engineering in Petrochemical Tubular Heaters", SH/T 3113-2016 "Technical Standards for Burner Design and Manufacturing", and JCT 60027-2025 "Technical Specification for Phase Change Thermal Storage Radiant Floor Heating Engineering". Through its professional capabilities, Ruichang International actively promotes the standardized development of the industry.

Intellectual Property Protection

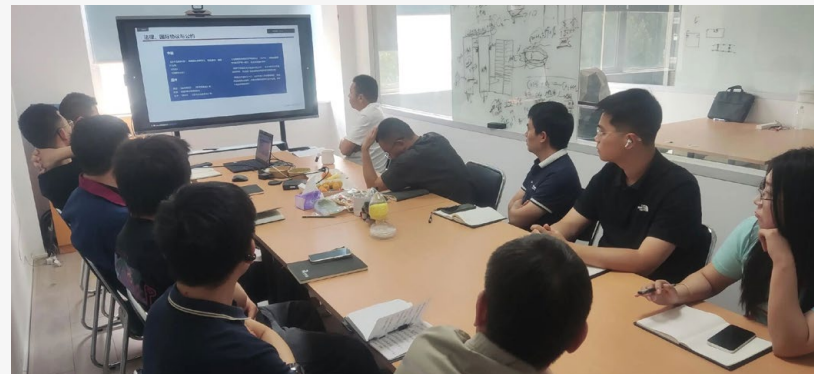
The Company has built a full-process, closed-loop IP management and protection mechanism. Supporting management forms like the *R&D Project Proposal*, *R&D Project Review Form*, and *R&D Project Task Book* clarify requirements for IP mining, application, and subsequent operation throughout the R&D project lifecycle, ensuring integration of R&D and IP protection for full protection and efficient transformation of innovations. IP rights protection incentive mechanism has been established to reward personnel for outstanding efforts in safeguarding rights. Against acts like theft or infringement of Company IP, the Company will resolutely protect its rights in accordance with the law, demanding cessation and compensation, and pursuing legal avenues if necessary to effectively safeguard its legitimate rights and interests.

Since November 2024, the Company has engaged a third party for end-to-end IP services covering projects from initiation to industrialization, further strengthening IP protection and R&D efficacy.

To ensure innovations are protected throughout their lifecycle, the Company conducts IP protection training, strengthening employee awareness through systematic knowledge dissemination and practical guidance.

Strengthening Trade Secret Protection, Empowering Business Development

In May 2025, Ruichang International organized a specialized training session on "Corporate Trade Secret Protection and Management", inviting an external expert to educate employees on trade secret safeguarding. The training covered multiple dimensions, including the establishment of confidentiality systems, personnel management, and technical protective measures. By analyzing real-world cases, the session broke down practical implementation strategies to help participants grasp key concepts. Through in-depth examination of typical trade secret leakage cases, the expert analyzed the root causes and dissemination pathways of such risks, guiding employees in building robust internal protection systems and mitigating potential disclosure threats.



Trade Secret Protection and Management Training

2025 IP Performance

Total number of new patent applications

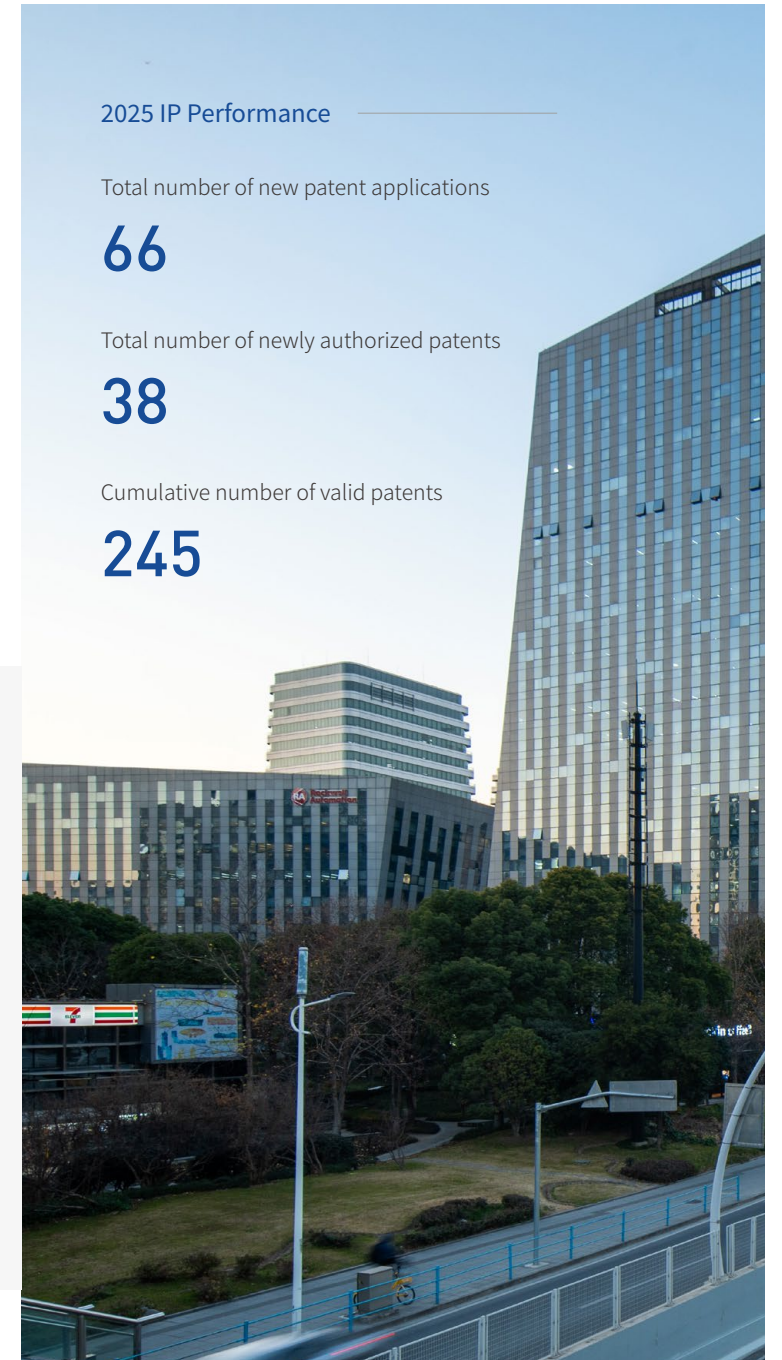
66

Total number of newly authorized patents

38

Cumulative number of valid patents

245



Product Stewardship

The Company consistently places product quality control at the core of its operational development. It has obtained relevant quality management system certifications and published a *Quality Management Manual*, establishing a standardized, end-to-end quality control system. The Company has also developed comprehensive product documentation and manuals, standardizing service protocols across the entire product lifecycle from design and specification to installation and commissioning. Additionally, internal quality inspection, rework procedures, and compliance regulations have been formulated to further strengthen product quality oversight and enhance overall product and service standards. The Company highly values customer service quality, striving to meet customer needs through both superior products and professional services, thereby continuously elevating comprehensive service value.

The Company has clearly defined its Quality Policy and Quality Objectives, using institutionalized guidelines to steer quality control efforts across all processes. The established quality objectives for 2025 were successfully met, ensuring consistent and compliant product quality.

Quality Policy

- View product quality as paramount
- Commit to customer satisfaction as our purpose
- Seek survival through continuous system improvement
- Pursue development through product innovation

Quality Objectives

- First-pass product inspection acceptance rate: $\geq 97\%$, increasing by **0.1%** annually.
- Customer satisfaction rate: $\geq 80\%$, increasing by **0.2%** annually.
- Contract fulfillment rate: **100%**.

Product Quality Assurance

Ruichang International has established a systematic and standardized product quality control system, strictly implementing full-process quality management measures to ensure quality control from design drawings to final product inspection.

Drawing Review

All drawings, whether provided by clients, design institutes, or developed internally, are strictly managed per the internal *Design and Process Document Management Regulations*. They require signatures from the designer, checker, and reviewer before release, accompanied by review record cards and/or design quality assessment forms.

Material Procurement

Upon completion of design drawings, procurement is initiated based on material requirements. The purchaser creates a Goods Receipt Inspection Form in the ERP system. Materials are processed for warehousing only after passing inspection. If materials fail inspection, the quality inspector initiates an Unqualified Raw Material Handling Form for coordinated handling by relevant departments.

Lean Production

Manufacturing engineers disassemble and detail the drawings, compiling various process documents. Production teams manufacture according to these documents, performing strict self-inspections during the process based on product type, drawing requirements, and process specifications. Products are submitted to the quality inspector for inspection only after passing self-inspection.

Product Quality Inspection

Quality inspectors examine physical products against requirements from drawings, agreements, etc. Products passing inspection proceed to the next process or stage. If non-conformities are found, the quality inspector initiates an Unqualified Raw Material Handling Form for coordinated handling by relevant personnel and departments.



Ruichang International ISO 9001 Quality Management System Certification

Quality Audit

The Company systematically conducts internal quality audits annually, performing comprehensive reviews and sample verification of all documentation and key records within the quality control system. This ensures strict compliance and efficiency across all operational stages. The audit scope comprehensively covers core documents such as design files, technical drawings, Bills of Materials (BOM), incoming inspection records, warehousing applications, inspection records, and quality reports. This enables end-to-end verification of management processes from product design, material procurement, and manufacturing to quality inspection. Through this standardized, full-process system review, product quality risks are minimized, and the Company's overall quality control level is continuously improved.

The Company's Audit Department leads the enhancement of the quality audit and assessment mechanism, developing a standardized audit process card that clarifies key assessment checkpoints and timeline requirements for each work stage. It focuses on assessing the progress and completion quality of core milestones such as audit finalization and submission of handover documentation. Furthermore, the Audit Department effectively fulfills its role in quality oversight by routinely conducting special audits on inspectors' workflows, operational compliance, and inspection results. This strengthens process control within the inspection phase, ensuring the professionalism and accuracy of inspection activities.

Quality Training

Quality training serves as a vital foundation for consolidating quality awareness, standardizing operational practices, and ensuring stable product quality throughout the lifecycle. The Company consistently integrates quality training into the core activities of its quality management system. Through systematic, regular, and scenario-based training mechanisms, it promotes the integration of quality principles and operational standards into all business processes, providing solid talent and capability support for the continuous enhancement of product quality.

Quality Performance Assessment

The Company has established a quality assessment mechanism that combines incentives and accountability within a closed-loop management framework. It has formulated the *Quality Incident Handling Management Procedure* and the *Company Improvement Proposal Reward Scheme* to strengthen quality control across all processes through both responsibility assignment and incentive-driven innovation.

Regarding quality accountability, the Company categorizes quality issues into four severity levels. The department head where the issue occurred leads the investigation to ascertain facts, identify responsible parties, communicates confirmation in writing with the personnel responsible, and spearheads the development of targeted corrective actions. Corresponding assessments are applied to relevant personnel based on the financial loss and severity of the quality incident, ensuring accountability is enforced and issue resolution forms a closed loop.

For positive reinforcement, the Company solicits improvement proposals from all employees regarding potential operational risks, quality hazard prevention suggestions, and process optimization ideas. Proposals that can effectively prevent quality incidents or enhance operational efficiency undergo periodic review, and proposers receive corresponding rewards. At the end of each year, the Quality Center, in collaboration with heads of various quality control departments, conducts a comprehensive evaluation of frontline teams and departments that had no quality incidents throughout the year. Outstanding quality units and individuals are selected, recognized, and awarded special bonuses according to Company regulations, using positive incentives to continuously elevate company-wide quality responsibility awareness.



Customer Service Experience

Ruichang International leverages its Customer Relationship Management (CRM) system to build a digitalized customer relationship management framework, embedding high-quality service throughout the entire cooperation cycle. The Company continuously focuses on collecting customer feedback and handling inquiries, constantly improving after-sales service safeguards. Through professional, efficient, and attentive service, it establishes long-term, mutually beneficial partnerships based on trust.

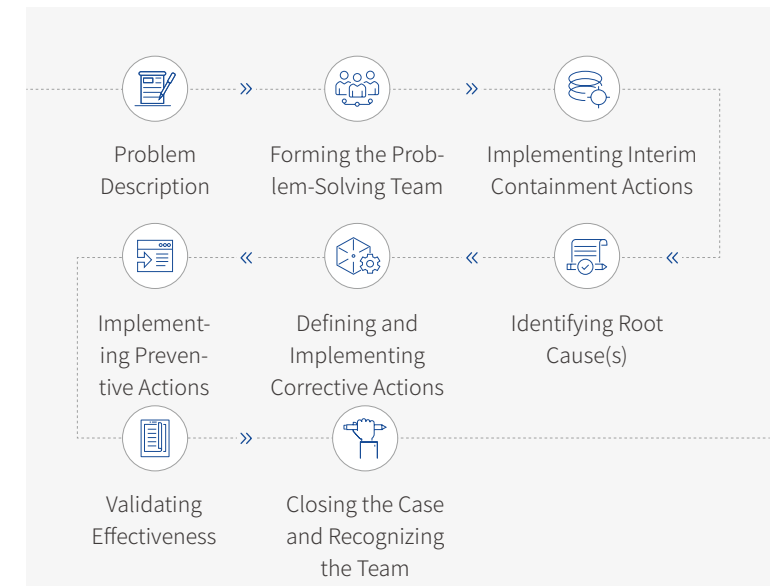
CRM System Overview *Customer Tier Management, Contact Management, 360° Customer View, Customer Dynamic Evaluation*



Customer Complaint Handling

The Company has established the *Quality Complaint Handling and Corrective Action Procedure*, creating a standardized and transparent mechanism for handling customer complaints and quality issues, covering all scenarios such as product quality, after-sales installation services, and technical support. For general quality issues, the sales personnel initiate a "Site Quality Issue Feedback" process. After approval by the person responsible, it is assigned to the relevant department and personnel for resolution. In the event of major or critical quality incidents, the Quality Center strictly follows an 8D process to conduct a special investigation. It collaborates with relevant responsible departments to identify root causes, define accountability, and conduct corresponding personnel assessments. Furthermore, typical incidents are documented as case studies for focused sharing, review, and warning through meetings or quarterly quality meetings.

8D Process for Quality Incident Handling



Customer Needs Communication

The Company maintains regular and frequent communication with customers, continuously listening to frontline feedback to accurately capture their genuine operational needs, usage experiences, and long-term development expectations. Leveraging its professional technical expertise and industry experience, the Company tailors integrated solutions that closely align with customers' practical requirements. Throughout the entire product R&D process, the Company maintains close connection with customers, promptly sharing project progress updates and dynamically integrating technical resources based on customer feedback to genuinely meet core customer expectations.



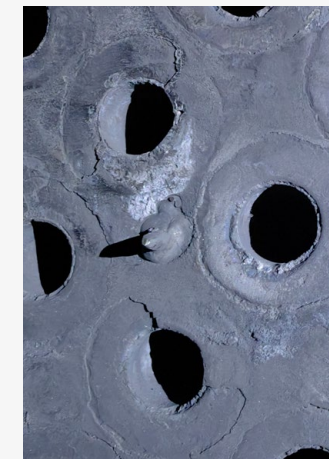
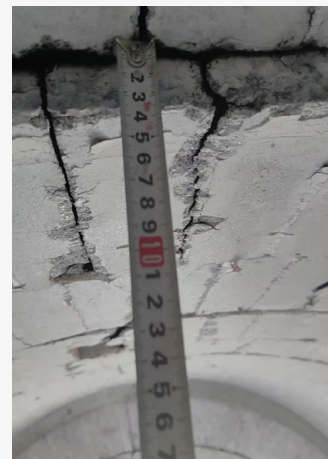
Ruichang International in Communication with Customers

Customer Guidance Services

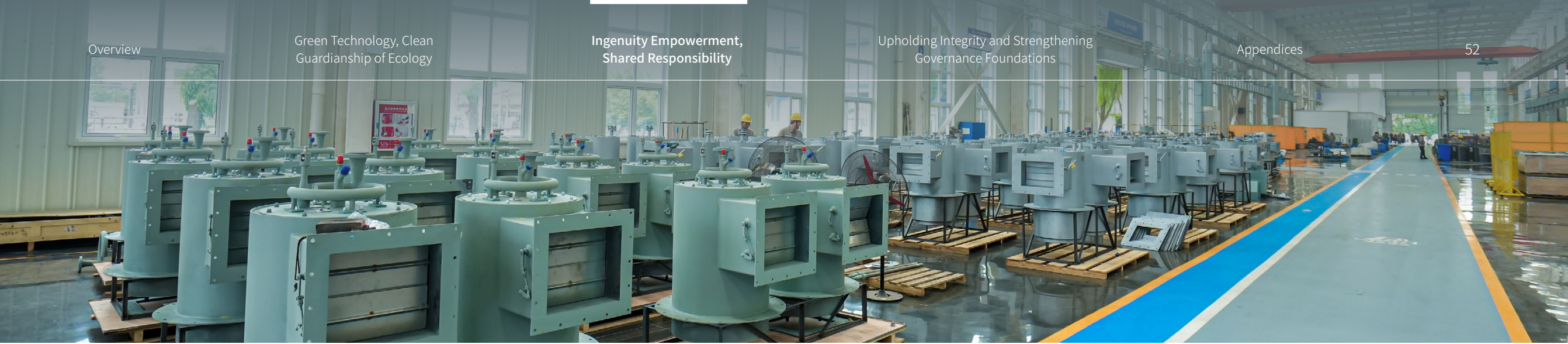
The Company provides customers with efficient and professional technical guidance services. After product delivery, the Company proactively conducts specialized training for customers, focusing on product usage precautions, operational standards, and maintenance key points. Detailed and standardized product operation manuals are provided concurrently to ensure that relevant customer personnel fully grasp operational procedures and understand safety requirements. For common after-sales issues, the technical team offers online video guidance and debugging services for rapid remote response and efficient problem-solving. For complex issues requiring on-site support, the Company's after-sales service team dispatches technicians promptly to provide professional maintenance and handling, ensuring customers receive targeted solutions in the shortest possible time. Through this coordinated online-offline after-sales service model, Ruichang International safeguards customers' legitimate rights and interests.

Ruichang International Assisting On-Site with Product Usage

In 2025, responding to crystallization issues in a waste heat boiler and burner replacement needs at a customer site in Shaanxi, the Company immediately dispatched personnel for a comprehensive on-site inspection. The investigation revealed damage to the boiler's refractory lining, for which emergency replacement was promptly completed for the customer. It was determined that the issue resulted from the customer's prolonged low-load operation, leading to damage to some refractory materials. Following this emergency intervention, the customer's production was quickly restored. The Company will continue to follow up and support subsequent equipment replacement needs to ensure stable project operation.



On-Site Equipment



Customer Experience Evaluation

The Company attaches great importance to customer experience evaluation, with customer satisfaction surveys and regularized customer follow-ups serving as core methods to comprehensively grasp customer needs and service feedback. During the reporting period, the Company conducted surveys through multiple online and offline channels to gather more comprehensive customer evaluations, accurately understanding their genuine perceptions and potential needs regarding products and services. Simultaneously, a standardized customer follow-up mechanism was established to regularly engage and communicate with customers, monitor product usage and service implementation outcomes, actively listen to customer concerns, and address their inquiries. Through systematic organization and analysis of survey data and follow-up feedback, customer input is translated into specific improvement measures, driving continuous enhancement of products and services. This approach effectively elevates customer experience and satisfaction, solidifying long-term, stable customer relationships.

During the reporting period, thanks to its high-quality service performance and reliable delivery capabilities, the Company received multiple commendation letters from clients and was honored with several awards as an outstanding supplier. These achievements fully reflect the market's and customers' high recognition of the Company's service quality, fulfillment capabilities, and overall value. Moving forward, the Company will continue to deepen the construction of its service system, consistently enhance customer experience, and work hand-in-hand with clients to achieve long-term mutual success and sustainable development.

2025 Ruichang International Customer Service Performance

Product recall incidents **0**

Percentage of products recalled due to safety and health issues **0%**

Customer Satisfaction (Project Satisfaction Feedback) **≥ 95%**

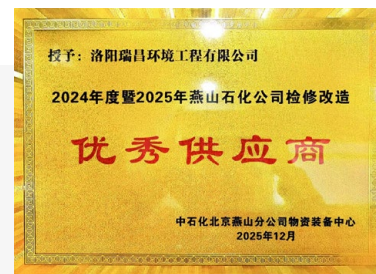
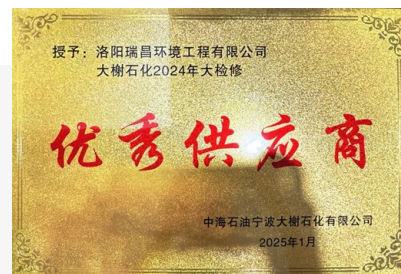
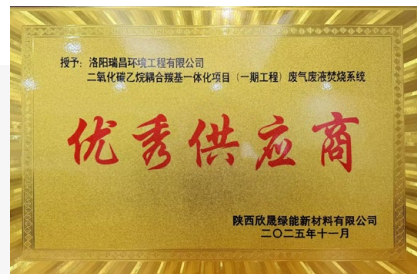
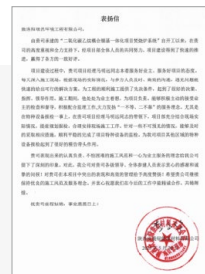
Total customer complaints **11**

Of which, complaints related to product quality and services **1**

Complaint resolution rate **100%**

Standard complaint resolution timeline: Solution provided within **24** hours

Complex complaint resolution timeline: Solution provided within **48** hours



Commendation Letter and "Excellent Supplier" Award Received by Ruichang International

Sustainable Supply Chain

Ruichang International places emphasis on supplier compliance management and the development of a sustainable supply chain, continuously strengthening the construction of a supplier responsibility management system. By establishing comprehensive supplier management requirements, sound supplier management processes, and targeted supplier enablement support programs, we collaborate with upstream and downstream suppliers across the industrial chain to fulfill social and environmental responsibilities.

The Company has formulated the *Procurement Department Supplier Management System*, *Supplier Management Regulations*, and *Qualified Supplier Management Measures*, persistently refining the end-to-end supplier management mechanism. This mechanism implements tiered and differentiated management of suppliers across four major modules: supplier screening and qualification, daily management, corrective action and improvement, and communication and appeals. Furthermore, we have established on-site supplier assessment plans to ensure product quality and safety from the source.

Supplier Full Lifecycle Management

Qualification Assessment

Based on relevant supplier management systems and standards, suppliers are evaluated comprehensively across dimensions such as business qualifications, quality system certifications, and sustainable development requirements. Key suppliers undergo on-site assessments.

Daily Management

Qualified suppliers are managed by tier. They are evaluated and assessed through immediate reviews, project-based reviews, and annual comprehensive reviews.

Corrective Action & Improvement

Suppliers failing to meet standards are classified as "under observation" for improvement within a specified period or are eliminated.

Communication & Appeals

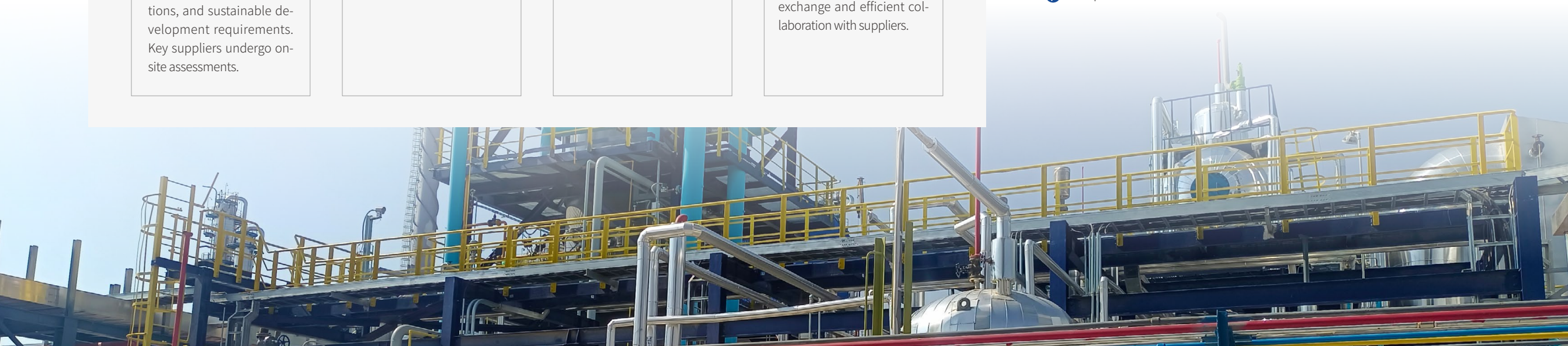
A clear communication channel with suppliers is maintained. Relying on the official website, official public account, and dedicated online communication channels ensures timely information exchange and efficient collaboration with suppliers.

Sustainable Procurement

Ruichang International actively integrates sustainability commitments into procurement activities, adhering to responsible procurement practices. During supplier qualification and daily management, we set requirements for suppliers in key ESG areas such as environmental management, employee labor rights, and occupational health and safety. Additionally, the Company has formulated a *Supplier Code of Conduct* for key suppliers. Through the dissemination and implementation supervision of this code, we guide upstream and downstream partners to operate in a standardized, compliant, and responsible manner, jointly building a green, compliant, and responsible sustainable supply chain.

Ruichang International's Key ESG Requirements for Suppliers:

- ➔ Conduct business legally and with integrity
- ➔ Uphold business ethics
- ➔ Ensure product quality and engage in responsible innovation
- ➔ Treat all employees equally, respecting and safeguarding their rights
- ➔ Protect the health and safety of all employees at work
- ➔ Emphasize environmental friendliness





Supplier Capacity Building

Ruichang International emphasizes growing together with its suppliers, consistently providing them with targeted resources and assistance. We guide suppliers during procurement stages such as qualification assessment and daily management, and organize supplier training on topics like quality management and safety to continuously empower them. Simultaneously, we set requirements for suppliers regarding occupational health, safety, environmental impact, and social responsibility, promoting self-inspection, self-assessment, and self-correction within their organizations, thereby comprehensively enhancing their product and service levels.

Supplier Safety Training

The Company mandates safety training for all visiting supplier personnel to ensure they understand factory safety regulations and avoid operational risks. The training content covers six core modules:

Electrical Safety	Temporary wiring must be performed by the Company's licensed electricians; energy isolation must strictly follow the lockout/tagout (LOTO) procedure; all power cables should be treated with caution as if energized.
PPE	Safety helmets and safety shoes are mandatory when entering production areas. Safety goggles are required for grinding work, and safety harnesses for work at height. Corresponding PPE must be used as specified for special operations.
Smoking Control	Smoking is prohibited throughout the entire factory premises. It is only permitted in designated areas during specified times.
Emergency Response	Familiarity with primary and secondary exits and assembly points in all areas is required.
Special Operations	Special operations such as hot work, confined space entry, and road occupation can only be conducted after obtaining the proper work permit as per regulations.
Incident Reporting	In case of a safety incident, it must be reported immediately to the Company's HSE Department to ensure timely response and minimize losses.

In 2025

Ruichang International had a total of

881 suppliers

including:

864 in Mainland China

17 Overseas



Social Welfare

While achieving steady operation and development, Ruichang International remains mindful of society and actively fulfills its social responsibilities by supporting public welfare initiatives. We actively respond to the national rural revitalization strategy, pay attention to pressing social development issues, and leverage our professional expertise and resource advantages to carry out charitable public welfare activities, striving for harmonious coexistence with society.

Education is the future of sustainable social development. Ruichang International fully utilizes its resources and professional strengths to consistently implement public welfare projects that support educational development and contribute to talent cultivation. Since 2012, the Company has invested in the construction of Ruichang Hope Primary School, helping to improve the local educational environment and providing better learning conditions for children in underprivileged areas. The Company has always upheld its social responsibilities as a mission, with educational public welfare at its core.

On February 28, 2025

The Company visited Shicun Central Primary School (Ruichang Hope Primary School) in Yiyang County and donated

3,000

RMB to encourage students to strive for excellence and aim high.

On May 31, 2025

The Company donated

11

standing air conditioners to the Hope Primary School, creating a comfortable learning environment for students.

In August 2025

The Company customized short-sleeved shirts and jackets for

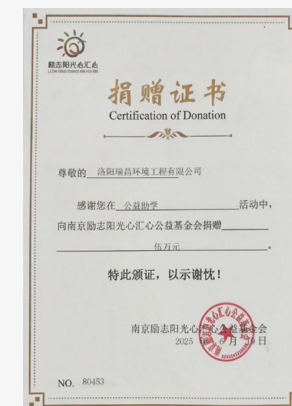
21

teachers at the Hope Primary School, expressing respect for rural educators and contributing to the development of rural education through small but meaningful actions.

Joining Hands with Nanjing Lizhi Yangguang Xinhui Xin Public Welfare Foundation to Support Rural Education Development

In May 2025, Ruichang International entered into a cooperation agreement with the Nanjing Lizhi Yangguang Xinhui Xin Public Welfare Foundation (hereinafter referred to as the Foundation). Building on its existing support for Shicun Central Primary School (Ruichang Hope Primary School) in Yiyang County, Ruichang International will collaborate with the Foundation to provide more professional and systematic assistance to the school. In early June 2025, Ruichang International donated its first contribution of 50,000 RMB to the Foundation, continuing to contribute more to the development of rural education.

The Nanjing Lizhi Yangguang Xinhui Xin Public Welfare Foundation is a professional organization dedicated to supporting education for underprivileged students, equipped with a skilled service team and strong resource integration capabilities. Guided by its mission to help rural students in economically underdeveloped areas access high-quality and balanced education, the Foundation mobilizes caring forces from across society, focusing on disciplines such as sports, arts, science, and traditional Chinese culture. It gathers resources to help rural children enjoy equitable and quality education, empowering the dreams of rural youth to take flight.



Ruichang International's Donation
Certificate to the Foundation



Ruichang Hope Primary School

Upholding Integrity and Strengthening Governance Foundations

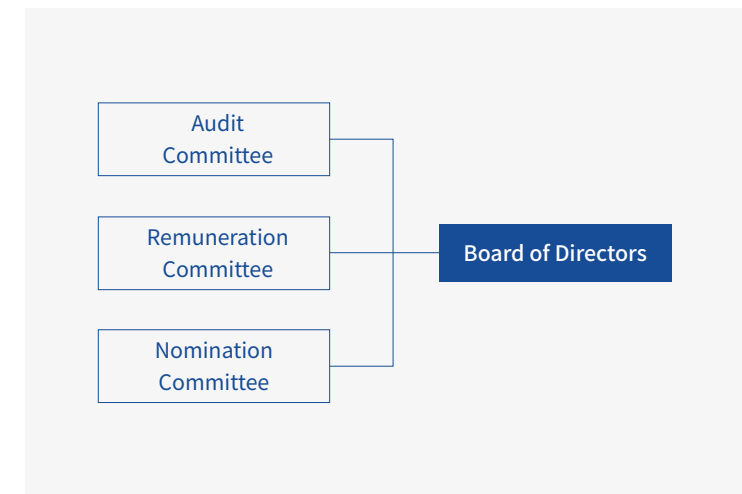
A robust corporate governance framework serves as the cornerstone for high-quality corporate development and a critical prerequisite for enhancing competitiveness. Ruichang International continuously elevates its governance standards, refines risk and compliance management, solidifies governance foundations, invigorates organizational dynamism, strengthens endogenous development capabilities, and propels the Company towards sustainable growth.



Corporate Governance

Ruichang International rigorously adheres to relevant laws, regulations, and normative documents, including the Company Law of the *People's Republic of China*, the *Securities Law of the People's Republic of China*, and the *Corporate Governance Code* of The Stock Exchange of Hong Kong Limited. The Company has established a comprehensive legal entity governance structure and standardized operational mechanisms. Its governance bodies encompass the General Meeting of Shareholders, the Board of Directors and its specialized committees, the Board of Supervisors, and the senior management team. Professional roles such as Independent Directors and the Company Secretary are also in place. The authority, responsibilities, and operations of the Company's power organ, decision-making bodies, supervisory bodies, and management are clearly defined and function in a well-ordered manner, effectively safeguarding the legitimate rights and interests of shareholders and the overall interests of the Company. This lays a solid governance foundation for the Company's sustained and stable development.

The Board of Directors has established three specialized committees: the Audit Committee, the Remuneration Committee, and the Nomination Committee. These committees perform their respective duties, providing professional oversight over the Group's management and operations. They conduct prudent reviews and offer professional guidance concerning the Group's operational policies, major decisions, and development strategies. The Company places high importance on the independence, diversity, and professional competency of the Board. During the director nomination process, explicit requirements mandate comprehensive consideration of diverse factors including gender, age, educational and cultural background, ethnicity, professional skills, knowledge, industry experience, and tenure. As of the end of the reporting period, the Board of Directors and the Board of Supervisors comprised a total of 8 members, including 3 Independent Directors. Regarding gender composition, 3 board members were female, exceeding one-third of the total Board membership. All Board members possess diverse and extensive professional backgrounds spanning core areas such as business administration, law, finance, and accounting. With years of deep experience in the petrochemical equipment industry, they are well-equipped to provide comprehensive and professional strategic guidance for the formulation and implementation of the Group's strategic plans and major operational decisions.



Total members of the Board of Directors and the Board of Supervisors

8

Number of independent non-executive directors

3

Number of female board members

3

exceeding

1/3

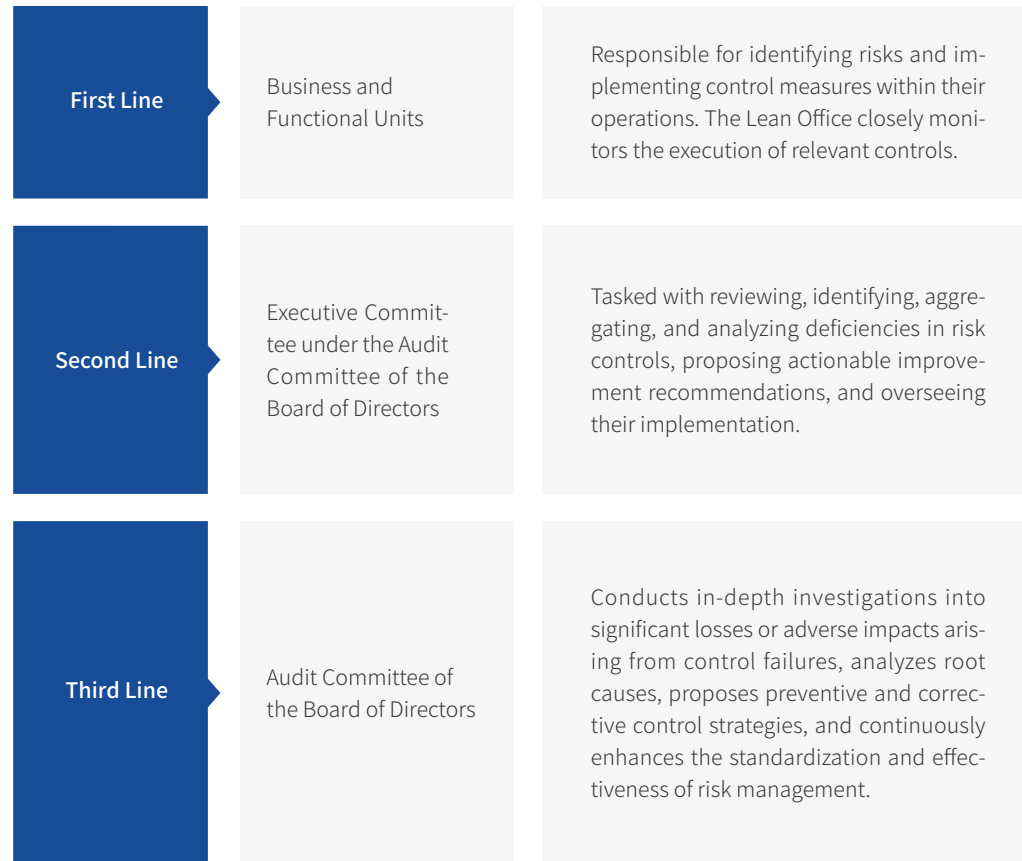
of the total board members

Risk Management

Ruichang International continuously enhances its risk management framework. The Company has formulated the *Enterprise Risk Management System* to clarify risk management processes, strengthen controls over key activities, and improve its risk governance and mitigation capabilities.

Risk Management Structure

Ruichang International's comprehensive risk management organizational structure consists of three lines of defense:



Risk Management Process

The Company manages risks through a four-stage process: Risk Identification, Risk Analysis and Assessment, Risk Response, and Risk Monitoring. Regular risk identification and assessment are conducted, alongside strengthened supervision, inspection, and evaluation of risk management measures and responses, thereby strengthening the risk management mechanism.

Key Activities in Risk Management



Business Ethics

The Company attaches great importance to anti-corruption initiatives and strictly complies with relevant laws and regulations, including the *Anti-Money Laundering Law of the People's Republic of China* and the *Anti-Unfair Competition Law of the People's Republic of China*. It maintains a zero-tolerance stance towards illegal activities such as corruption, bribery, and unfair competition. The Company has established the Business Ethics Management Standards and the *Employee Anti-Bribery and Anti-Corruption Code of Conduct* to provide a clear basis for ethical operations. These explicitly prohibit employees from engaging in misconduct including fraud, embezzlement, corruption, bribery, fraud, and money laundering, and require the avoidance of conflicts of interest and unfair competition. The Company also ensures adherence to principles of fair competition in its business activities, consciously avoiding monopolistic and unfair competitive practices. Furthermore, the Company incorporates integrity clauses into agreements with business partners, requiring suppliers to comply with relevant anti-corruption requirements.

Whistleblowing Channels and Protections

Ruichang International has established formal channels for reporting business ethics concerns. Internal and external stakeholders can provide information regarding corruption, bribery, fraud, or other violations of business ethics through various means, including verbal, written, or email communication.

The Company places significant emphasis on protecting the identity of whistleblowers, strictly controlling access to information. Personnel handling reports at all levels maintain strict confidentiality regarding whistleblower information, and any unauthorized disclosure is dealt with severely. The Company strictly prohibits retaliation against reporting employees, including harassment, demotion, dismissal, disciplinary action, suspension, threats, or any other form of reprisal based on the reporting act.

In 2025, the Company recorded no major incidents involving violations of business ethics.



Data and Privacy Protection

Ruichang International strictly adheres to regulations such as the *Cybersecurity Law of the People's Republic of China*, the *Data Security Law of the People's Republic of China*, and the *Personal Information Protection Law of the People's Republic of China*. The Company has formulated and implemented the *Information Security and Customer Privacy Management System*, defining control standards, responsibility assignments, and operational procedures to comprehensively guard against information security risks and effectively protect the security of the Company's information assets and customer privacy rights.

Access Control

Implement access controls within various systems based on user roles and responsibilities, applying the "principle of least privilege" for permission settings.

Data Encryption

Utilize an electronic document security management system to encrypt data during transmission and storage, ensuring confidentiality and integrity.

Information Security Incident Response

Implement a 24-hour security incident response mechanism, which enables swift actions when security incidents occur in the system. These measures include isolating affected systems, repairing security vulnerabilities, and other steps to minimize the impact of security incidents.

Information Security Monitoring and Auditing

Monitoring and auditing serve as critical supports for preventing data risks and safeguarding information assets and customer privacy. Under the framework of the *Information Security and Customer Privacy Management System*, the Company has established a comprehensive monitoring and auditing system covering system operations, user activities, vulnerability management, and compliance verification.



Operational Monitoring

Employs real-time monitoring technologies for information systems, including databases, hosts, network devices, and information transmission channels. Monthly inspections of the main data center's network environment and hardware are conducted by an external professional service provider to promptly identify and address potential risks.



Audit Log Management

Implements an audit log management policy to record and monitor all access to sensitive information and critical operations. Logs include access records, operation logs, and modification histories.



System Vulnerability Management

Conducts regular system vulnerability scans and remediation to promptly identify and patch security flaws. The Company also collects, analyzes, and addresses security events from internal and external sources to minimize business impact.



Audit Inspections

Performs regular security audit inspections covering information security policies, security protocols, data integrity, and employee network usage to ensure alignment with business development and security management objectives.

Information Security Training

To reinforce the implementation of information security policies and strengthen management, the Company organizes information security training for employees and conducts regular awareness campaigns. Training content covers operational procedures and risk prevention case studies, combining theoretical explanation, practical exercises, and case analysis to enhance employee awareness of information security and data protection.

Specialized Training on "Confidential Information and Intellectual Property Protection"

In July 2025, Ruichang International jointly conducted specialized training on "Confidential Information and Intellectual Property Protection" with Honeywell UOP Callidus. The training featured a presentation by Honeywell expert, Professor Rohit Gupta, focusing on the protection of core corporate information assets, compliance management, and risk management. Integrating international cases and industry practices, the training systematically covered three key modules:

➔ Confidential Information Protection Mechanisms

Clarified the classification and management processes for sensitive information such as technical documents, customer data, and business strategies, emphasizing the "principle of least privilege access".

➔ Consequences of Leakage and Legal Liabilities

Analyzed cases to warn the profound impacts of information leaks on corporate reputation, financial interests, and legal compliance.

➔ Compliance with Intellectual Property Agreements

Detailed key points for executing contractual clauses, guiding employees on the proper use of patented technologies and trade secrets during collaborations.



Ruichang International jointly conducted specialized training on "Confidential Information" with Honeywell UOP Callidus

The training also targeted the sharing of protection techniques, such as data encryption, hierarchical access permissions, considerations for cross-border data transmission, and reiterated the individual responsibilities and obligations of employees in information protection. This ensures that security awareness is implemented in every aspect of daily work.

2025 Information Security and Privacy Protection Performance

Number of specialized information security inspections conducted

4

Information security vulnerability remediation rate

100%

Material information security and/or privacy breach incidents

0



Hong Kong Exchange ESG Reporting Guide Index

A. Environmental

General Disclosure and Key Performance Indicators / Description		
Aspect A1: Emissions		Chapter
General Disclosure	Information on: (a) the policies; and (b) compliance with relevant laws and regulations that have a significant impact on the issuer relating to air and greenhouse gas emissions, discharges into water and land, and the generation of hazardous and non-hazardous waste.	Emission Management
A1.1	Types of emissions and respective emissions data.	Emission Management
A1.3	Total hazardous waste produced (in tons) and, where appropriate, intensity (e.g. per unit of production volume, per facility).	Emission Management
A1.4	Total non-hazardous waste produced (in tons) and, where appropriate, intensity (e.g. per unit of production volume, per facility).	Emission Management
A1.5	Description of emissions targets set and steps taken to achieve them.	Emission Management
A1.6	Description of how hazardous and non-hazardous wastes are handled, reduction targets set and steps taken to achieve them.	Emission Management

General Disclosure and Key Performance Indicators / Description		
Aspect A2: Use of Resources		Chapter
General disclosure	Policies on the efficient use of resources, including energy, water and other raw materials.	Resource Management
A2.1	Direct and/or indirect energy consumption by type (e.g. electricity, gas or oil) in total (kWh in '000s) and intensity (e.g. per unit of production volume, per facility).	Resource Management
A2.2	Water consumption in total and intensity (e.g. per unit of production volume, per facility).	Resource Management
A2.3	Description of energy use efficiency targets set and steps taken to achieve them.	Resource Management
A2.4	Description of whether there is any issue in sourcing water that is fit for purpose, water efficiency targets set and steps taken to achieve them.	Resource Management
A2.5 ¹	Total packaging material used for finished products (in tons) and, if applicable, with reference to per unit produced.	Resource Management
Aspect A3: Environment and Natural Resources		
General disclosure		Chapter
General disclosure	Policies on minimising the issuer's significant impacts on the environment and natural resources.	Environmental Management
A3.1	Description of the significant impacts of activities on the environment and natural resources and the actions taken to manage them.	Environmental Management

¹Note: The Company's main packaging materials are wood-based materials, which are recycled and reused, so the consumption of packaging materials is not significant.

B. Social

General Disclosure and Key Performance Indicators / Description		
Aspect B1: Employment		Chapter
General disclosure	Information on: (a)the policies; and (b) compliance with relevant laws and regulations that have a significant impact on the issuer relating to compensation and dismissal, recruitment and promotion, working hours, rest periods, equal opportunity, diversity, anti-discrimination, and other benefits and welfare.	Employee Care
B1.1	Total workforce by gender, employment type (e.g. full- or part-time), age group and geographical region.	Employee Care
B1.2	Employee turnover rate by gender, age group and geographical region.	Employee Care
Aspect B2: Health and Safety		Chapter
General disclosure	Information on: (a)the policies; and (b)compliance with relevant laws and regulations that have a significant impact on the issuer relating to providing a safe working environment and protecting employees from occupational hazards.	Employee Care
B2.1	Number and rate of work-related fatalities occurred in each of the past three years including the reporting year.	Employee Care
B2.2	Lost days due to work injury.	Employee Care
B2.3	Description of occupational health and safety measures adopted, and how they are implemented and monitored.	Employee Care
Aspect B3: Development and Training		Chapter
General disclosure	Policies on improving employees' knowledge and skills for discharging duties at work. Description of training activities.	Employee Care
B3.1	The percentage of employees trained by gender and employee category (e.g. senior management, middle management).	Employee Care
B3.2	The average training hours completed per employee by gender and employee category.	Employee Care

General Disclosure and Key Performance Indicators / Description		
Aspect B4: Labour Standards		Chapter
General disclosure	Information on: (a)the policies; and (b)compliance with relevant laws and regulations that have a significant impact on the issuer relating to preventing child and forced labour.	Employee Care
B4.1	Description of measures to review employment practices to avoid child and forced labor.	Employee Care
B4.2	Description of steps taken to eliminate such practices when discovered.	Employee Care
Aspect B5: Supply Chain Management		Chapter
General disclosure	Policies on managing environmental and social risks of the supply chain.	Sustainable Supply Chain
B5.1	Number of suppliers by geographical region.	Sustainable Supply Chain
B5.2	Description of practices relating to engaging suppliers, number of suppliers where the practices are being implemented, and how they are implemented and monitored.	Sustainable Supply Chain
B5.3	Description of practices used to identify environmental and social risks along the supply chain, and how they are implemented and monitored.	Sustainable Supply Chain
B5.4	Description of practices used to promote environmentally preferable products and services when selecting suppliers, and how they are implemented and monitored.	Sustainable Supply Chain

General Disclosure and Key Performance Indicators / Description		
Aspect B6: Product Liability		Chapter
General disclosure	Information on: (a)the policies; and (b)compliance with relevant laws and regulations that have a significant impact on the issuer relating to health and safety, advertising, labelling and privacy matters relating to products and services provided and methods of redress.	Product Stewardship
B6.1	Percentage of total products sold or shipped subject to recalls for safety and health reasons.	Product Stewardship
B6.2	Number of products and service related complaints received and how they are dealt with.	Product Stewardship
B6.3	Description of practices relating to observing and protecting intellectual property rights.	Innovation, Research and Development
B6.4	Description of quality assurance process and recall procedures.	Product Stewardship
B6.5	Description of consumer data protection and privacy policies, and how they are implemented and monitored.	Data Privacy and Protection
Aspect B7: Anti-Corruption		Chapter
General disclosure	Information on: (a)the policies; and (b)compliance with relevant laws and regulations that have a significant impact on the issuer relating to bribery, extortion, fraud and money laundering.	Business Ethics
B7.1	Number of concluded legal cases regarding corrupt practices brought against the issuer or its employees during the reporting period and the outcomes of the cases.	Business Ethics
B7.2	Description of preventive measures and whistle-blowing procedures, and how they are implemented and monitored.	Business Ethics
B7.3	Description of anti-corruption training provided to directors and employees.	Business Ethics
Aspect B8: Community Investment		Chapter
General disclosure	Policies on community engagement to understand the needs of the communities where the issuer operates and to ensure its activities take into consideration the communities' interests.	Social Welfare
B8.1	Focus areas of contribution (e.g. education, environmental concerns, labor needs, health, culture and sport).	Social Welfare
B8.2	Resources contributed (e.g. money or time) to the focus areas.	Social Welfare

D. Climate-related Disclosures

Appendix D: Climate-related Disclosures		Chapter
Governance	a. Information on governance bodies/persons overseeing climate-related risks and opportunities.	Climate Change Adaptation
	b. Management's role in processes, controls, and procedures to monitor, manage, and oversee climate-related risks and opportunities.	
Strategy	Climate-related risks and opportunities	Climate Change Adaptation
	Business model and value chain	
	Strategy and decision-making	
	Financial position, performance, and cash flows	
	Climate resilience	
Risk Management	Processes for identifying, assessing, prioritizing, and monitoring climate-related risks.	Climate Change Adaptation
	Processes for identifying, assessing, prioritizing, and monitoring climate-related opportunities.	
Metrics and Targets	How and to what extent these processes are integrated into the issuer's overall risk management.	Climate Change Adaptation
	Greenhouse gas emissions	
	Climate-related transition risks	
	Climate-related physical risks	
	Climate-related opportunities	
	Climate-related targets	

